

## IL17B RABBIT PAB

**Cat.#:** S221971

**Product Name:** Anti-IL17B Rabbit Polyclonal Antibody

**Synonyms:** NIRF; IL-20; IL-17B; ZCYTO7

**UNIPROT ID:** Q9UHF5 (Gene Accession - NP\_055258 )

**Background:** The protein encoded by this gene is a T cell-derived cytokine that shares sequence similarity with IL17. This cytokine was reported to stimulate the release of TNF alpha (TNF) and IL1 beta (IL1B) from a monocytic cell line. Immunohistochemical analysis of several nerve tissues indicated that this cytokine is primarily localized to neuronal cell bodies. Alternative splicing results in multiple splice variants.

**Immunogen:** Synthetic peptide of human IL17B

**Applications:** ELISA, WB, IHC

**Recommended Dilutions:** IHC: 25-100;WB: 200-1000;ELISA: 5000-10000

**Host Species:** Rabbit

**Clonality:** Rabbit Polyclonal

**Isotype:** Immunogen-specific rabbit IgG

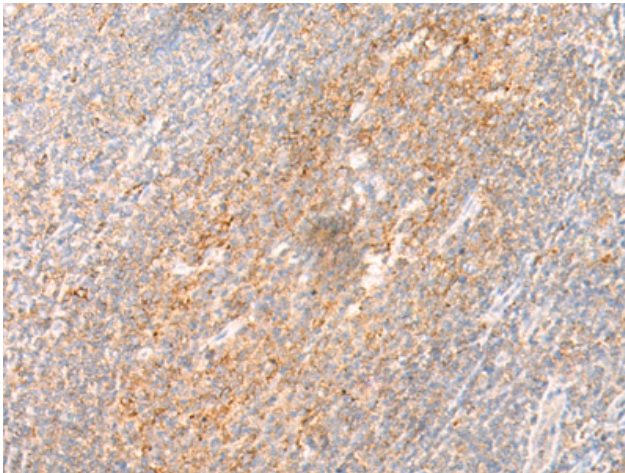
**Purification:** Antigen affinity purification

**Species Reactivity:** Human, Mouse, Rat

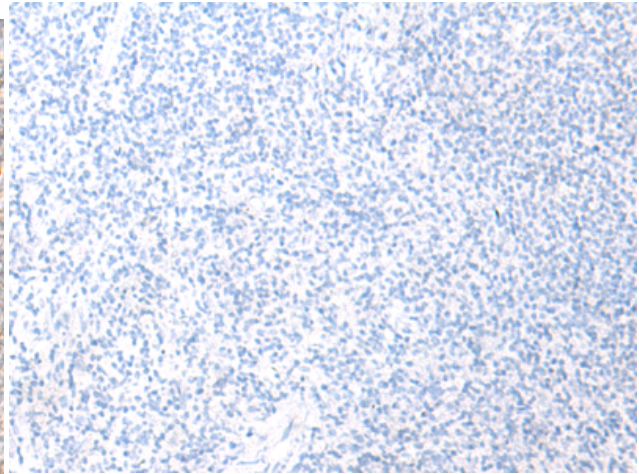
**Constituents:** PBS (without Mg<sup>2+</sup> and Ca<sup>2+</sup>), pH 7.4, 150 mM NaCl, 0.05% Sodium Azide and 40% glycerol

**Research Areas:** Immunology

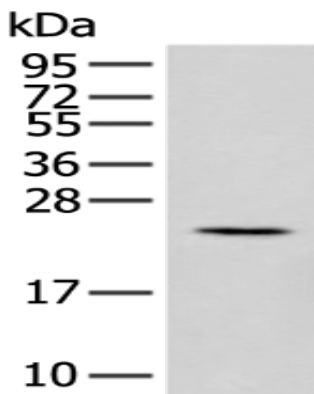
**Storage & Shipping:** Store at -20°C. Avoid repeated freezing and thawing



Immunohistochemistry analysis of paraffin embedded Human tonsil tissue using 221971(IL17B Antibody) at a dilution of 1/20(Secreted).



In comparison with the IHC on the left, the same paraffin-embedded Human tonsil tissue is first treated with the synthetic peptide and then with 221971(Anti-IL17B Antibody) at dilution 1/20.



Gel: 12%SDS-PAGE, Lysate: 40  $\mu$ g;  
Lane: Rat pancreas tissue lysate;  
Primary antibody: 221971(IL17B Antibody) at dilution 1/200;  
Secondary antibody: Goat anti rabbit IgG at 1/8000 dilution;  
Exposure time: 3 minutes