

IL12RB2 RABBIT PAB

Cat.#: S220621

Product Name: Anti-IL12RB2 Rabbit Polyclonal Antibody

Synonyms:

UNIPROT ID: Q99665 (Gene Accession - NP_001550)

Background: The protein encoded by this gene is a type I transmembrane protein identified as a subunit of the interleukin 12 receptor complex. The coexpression of this and IL12RB1 proteins was shown to lead to the formation of high-affinity IL12 binding sites and reconstitution of IL12 dependent signaling. The expression of this gene is up-regulated by interferon gamma in Th1 cells, and plays a role in Th1 cell differentiation.

Immunogen: Synthetic peptide of human IL12RB2

Applications: ELISA, IHC

Recommended Dilutions: IHC: 50-200; ELISA: 2000-5000

Host Species: Rabbit

Clonality: Rabbit Polyclonal

Isotype: Immunogen-specific rabbit IgG

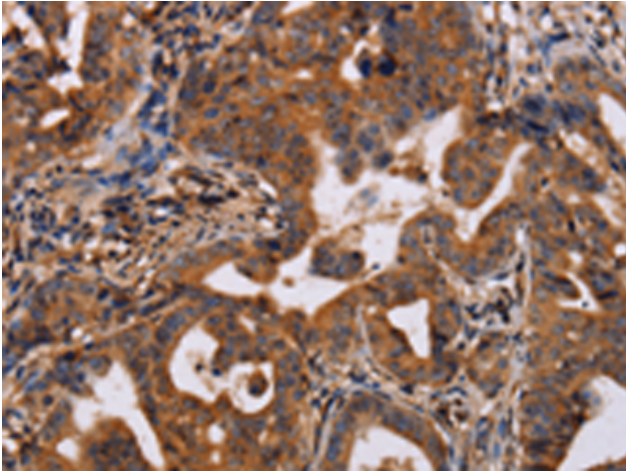
Purification: Antigen affinity purification

Species Reactivity: Human

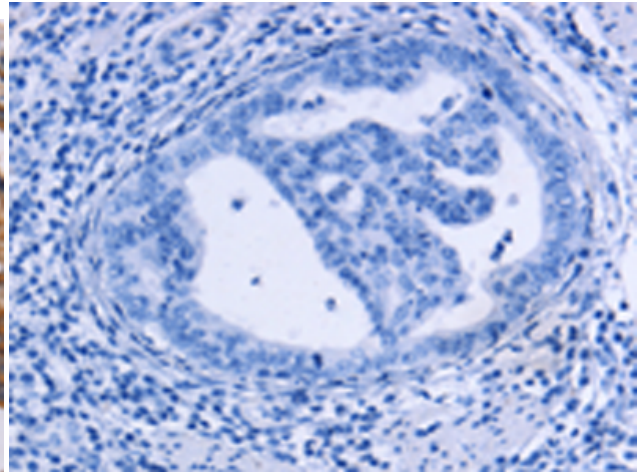
Constituents: PBS (without Mg²⁺ and Ca²⁺), pH 7.4, 150 mM NaCl, 0.05% Sodium Azide and 40% glycerol

Research Areas: Cancer, Immunology

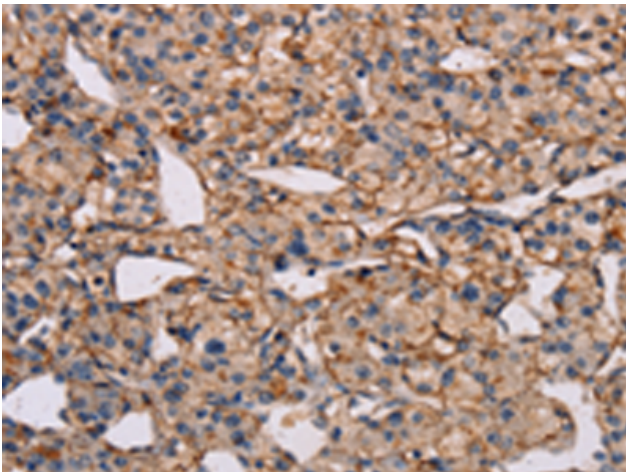
Storage & Shipping: Store at -20°C. Avoid repeated freezing and thawing



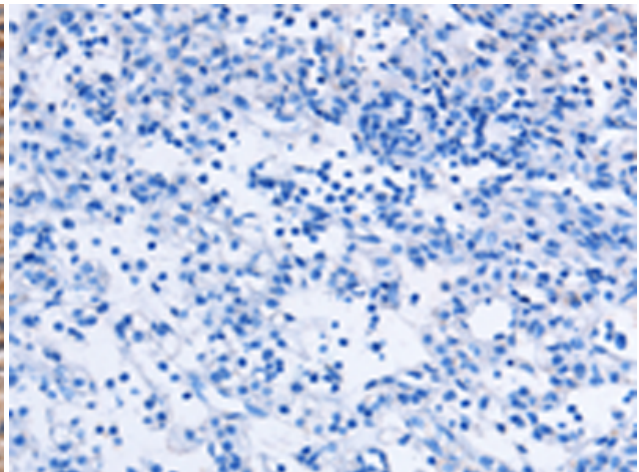
Immunohistochemistry analysis of paraffin embedded Human gastric cancer tissue using 220621 (IL12RB2 Antibody) at a dilution of 1/40 (Cytoplasm).



In comparison with the IHC on the left, the same paraffin-embedded Human gastric cancer tissue is first treated with the synthetic peptide and then with 220621 (Anti-IL12RB2 Antibody) at dilution 1/40.



The image on the left is immunohistochemistry of paraffin-embedded Human prostate cancer tissue using 220621 (Anti-IL12RB2 Antibody) at a dilution of 1/40.



In comparison with the IHC on the left, the same paraffin-embedded Human prostate cancer tissue is first treated with synthetic peptide and then with D261779 (Anti-IL12RB2 Antibody) at dilution 1/40.