

## IL12RB1 RABBIT PAB

**Cat.#:** S216299

**Product Name:** Anti-IL12RB1 Rabbit Polyclonal Antibody

**Synonyms:** CD212; IL12RB; IL-12R-BETA1

**UNIPROT ID:** P42701 (Gene Accession - BC029121 )

**Background:** The protein encoded by this gene is a type I transmembrane protein that belongs to the hemopoietin receptor superfamily. This protein binds to interleukine 12 (IL12) with a low affinity, and is thought to be a part of IL12 receptor complex. This protein forms a disulfide-linked oligomer, which is required for its IL12 binding activity. The coexpression of this and IL12RB2 proteins was shown to lead to the formation of high-affinity IL12 binding sites and reconstitution of IL12 dependent signaling. The lack of expression of this gene was found to result in the immunodeficiency of patients with severe mycobacterial and Salmonella infections. Two alternatively spliced transcript variants of this gene encoding distinct isoforms have been reported.

**Immunogen:** Fusion protein of human IL12RB1

**Applications:** ELISA, IHC

**Recommended Dilutions:** IHC: 15-50; ELISA: 1000-2000

**Host Species:** Rabbit

**Clonality:** Rabbit Polyclonal

**Isotype:** Immunogen-specific rabbit IgG

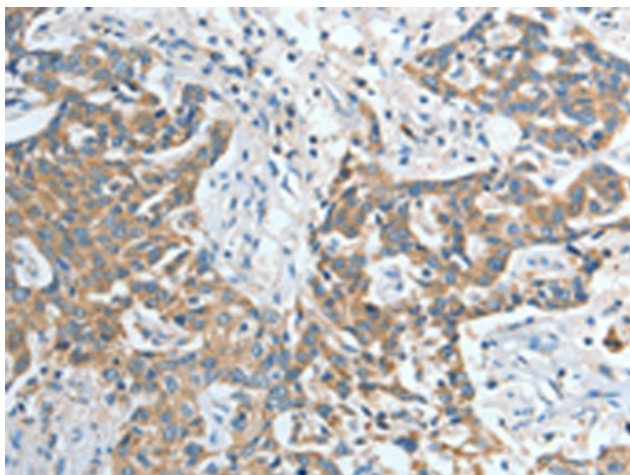
**Purification:** Antigen affinity purification

**Species Reactivity:** Human

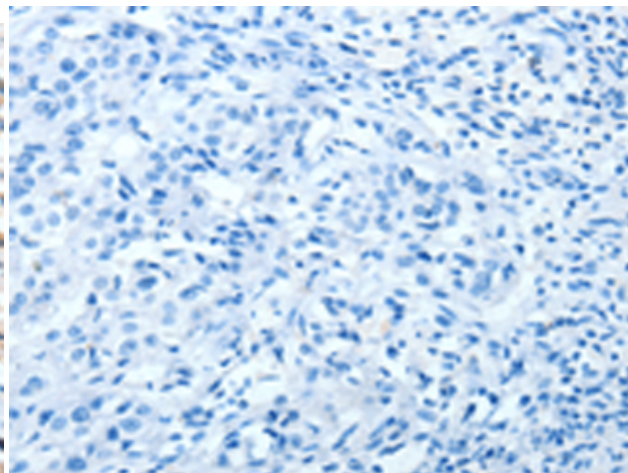
**Constituents:** PBS (without Mg<sup>2+</sup> and Ca<sup>2+</sup>), pH 7.4, 150 mM NaCl, 0.05% Sodium Azide and 40% glycerol

**Research Areas:** Immunology

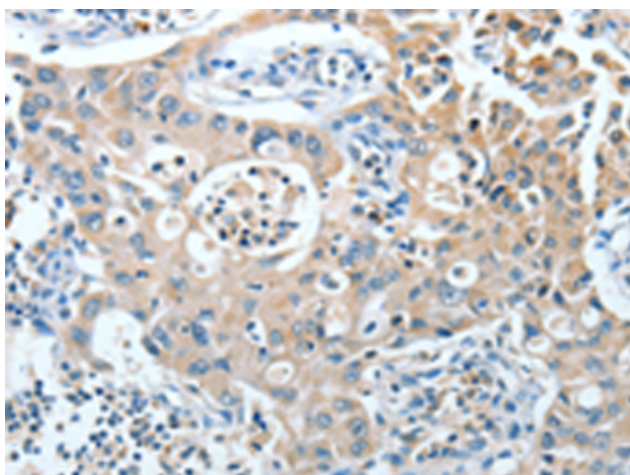
**Storage & Shipping:** Store at -20°C. Avoid repeated freezing and thawing



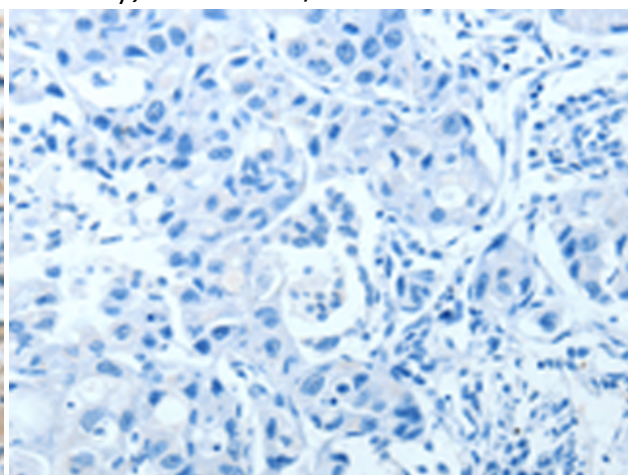
Immunohistochemistry analysis of paraffin embedded Human esophagus cancer tissue using 216299 (IL12RB1 Antibody) at a dilution of 1/20 (Cytoplasm).



In comparison with the IHC on the left, the same paraffin-embedded Human esophagus cancer tissue is first treated with the fusion protein and then with 216299 (Anti-IL12RB1 Antibody) at dilution 1/20.



The image on the left is immunohistochemistry of paraffin-embedded Human lung cancer tissue using 216299 (Anti-IL12RB1 Antibody) at a dilution of 1/20.



In comparison with the IHC on the left, the same paraffin-embedded Human lung cancer tissue is first treated with fusion protein and then with D220165 (Anti-IL12RB1 Antibody) at dilution 1/20.