

## IL-1 RECEPTOR ACCESSORY PROTEIN RABBIT MAB

**Cat.#:** N263383

**Product Name:** Anti-IL-1 Receptor Accessory Protein Rabbit Monoclonal Antibody

**Synonyms:** IL-1 Receptor Accessory Protein; IL1R3; C3orf13; IL-1RAcP

**UNIPROT ID:** Q9NPH3

**Background:** Interleukin 1 induces synthesis of acute phase and proinflammatory proteins during infection, tissue damage, or stress, by forming a complex at the cell membrane with an interleukin 1 receptor and an accessory protein. This gene encodes the interleukin 1 receptor accessory protein. The protein is a necessary part of the interleukin 1 receptor complex which initiates signalling events that result in the activation of interleukin 1-responsive genes. Alternative splicing of this gene results in two transcript variants encoding two different isoforms, one membrane-bound and one soluble. The ratio of soluble to membrane-bound forms increases during acute-phase induction or stress.

**Immunogen:** Recombinant protein of human IL-1RAcP

**Applications:** WB,IP

**Recommended Dilutions:** WB: 1/500-1/1000 IP: 1/20

**Host Species:** Rabbit

**Clonality:** Rabbit Monoclonal

**Clone ID:** R05-3B8

**MW:** Calculated MW: 65 kDa; Observed MW: 78 kDa

**Isotype:** IgG

**Purification:** Affinity Purified

**Species Reactivity:** Human

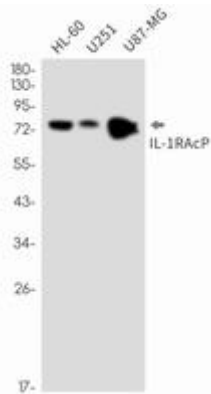
**Conjugation:** Unconjugated

**Modification:** Unmodified

**Constituents:** PBS (without Mg<sup>2+</sup> and Ca<sup>2+</sup>), pH 7.3 containing 50% glycerol, 0.5% BSA and 0.02% sodium azide

**Research Areas:** Immunology

**Storage & Shipping:** Store at -20°C. Avoid repeated freezing and thawing



Western blot analysis of IL-1RAcP in HL-60, U251, U87-MG lysates using IL-1 Receptor Accessory Protein antibody.