

IKBIP RABBIT PAB

Cat.#: S217535

Product Name: Anti- IKBIP Rabbit Polyclonal Antibody

Synonyms: IKIP

UNIPROT ID: Q70UQ0 (Gene Accession - BC058933)

Background: IKIP (Inhibitor of nuclear factor kappa-B kinase-interacting protein, IKK -interacting protein) is a single-pass membrane protein that shares a common promoter with APAF1 . APAF1 and IKIP are both induced by X irradiation, however, the two gene products are transcribed in different directions. The IKIP gene is believed to be a target for p53 as expression of IKIP has been shown to promote apoptosis. IKIP has four known isoforms, three of which are found traversing the endoplasmic reticulum membrane. IKIP isoform 4 has a deletion of the transmembrane region which leads to a homogenous distribution of the protein within the cell. The IKIP gene products are expressed in vascular endothelial cells, while the isoform 4 has also been detected in lung, kidney, spleen, thymus and skeletal muscle.

Immunogen: Fusion protein of human IKBIP

Applications: ELISA, IHC

Recommended Dilutions: IHC: 50–200; ELISA: 2000–5000

Host Species: Rabbit

Clonality: Rabbit Polyclonal

Isotype: Immunogen-specific rabbit IgG

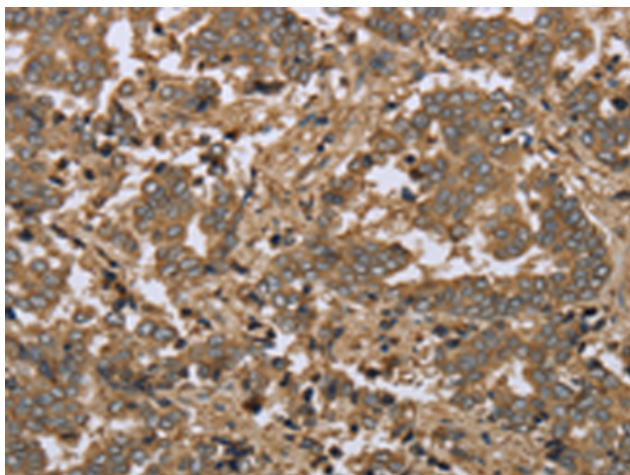
Purification: Antigen affinity purification

Species Reactivity: Human, Mouse, Rat

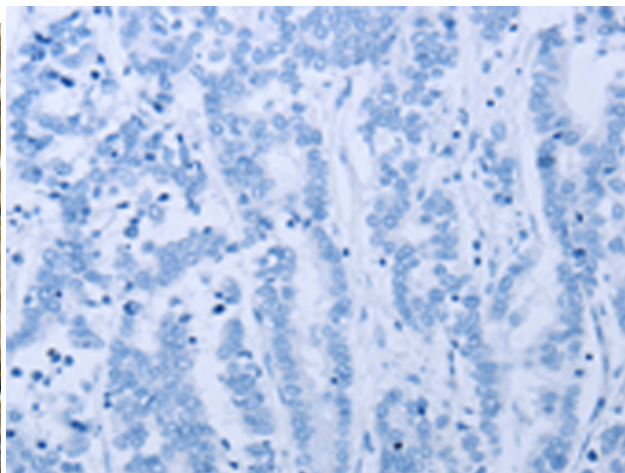
Constituents: PBS (without Mg^{2+} and Ca^{2+}), pH 7.4, 150 mM NaCl, 0.05% Sodium Azide and 40% glycerol

Research Areas: Cancer

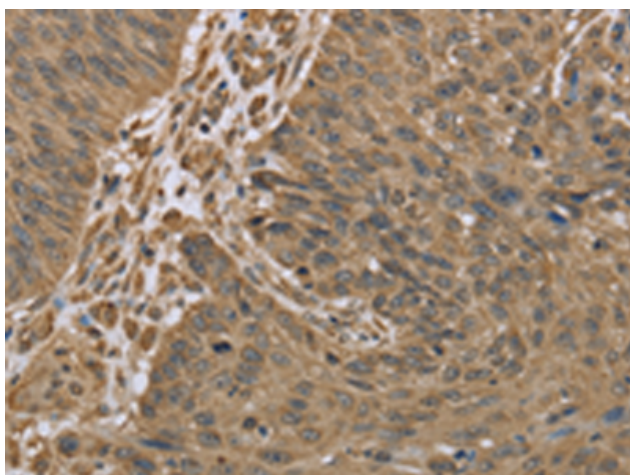
Storage & Shipping: Store at -20°C . Avoid repeated freezing and thawing



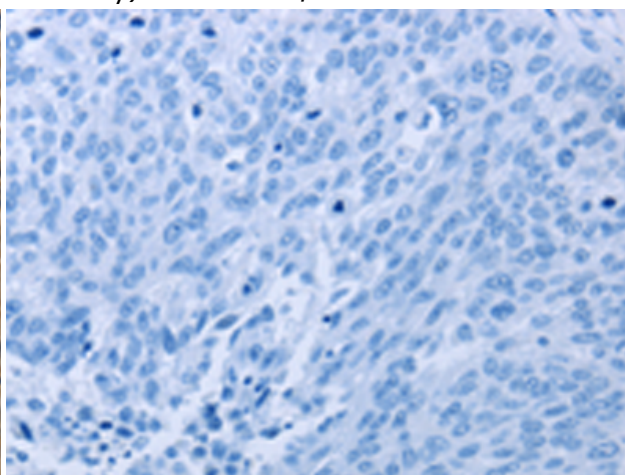
Immunohistochemistry analysis of paraffin embedded Human liver cancer tissue using 217535(IKBIP Antibody) at a dilution of 1/30(Cytoplasm).



In comparison with the IHC on the left, the same paraffin-embedded Human liver cancer tissue is first treated with the fusion protein and then with 217535(Anti-IKBIP Antibody) at dilution 1/30.



The image on the left is immunohistochemistry of paraffin-embedded Human lung cancer tissue using 217535(Anti-IKBIP Antibody) at a dilution of 1/30.



In comparison with the IHC on the left, the same paraffin-embedded Human lung cancer tissue is first treated with fusion protein and then with D222537(Anti-IKBIP Antibody) at dilution 1/30.