

IKB ALPHA RABBIT MAB

Cat.#: N261756

Product Name: Anti-IKB alpha Rabbit Monoclonal Antibody

Synonyms: NFKBIA; IKBA; MAD3; NFKBI; NF-kappa-B inhibitor alpha; I-kappa-B-alpha; Ikb-alpha; IkappaBalpha; Major histocompatibility complex enhancer-binding protein MAD3

UNIPROT ID: P25963

Background: NFKB1 (MIM 164011) or NFKB2 (MIM 164012) is bound to REL (MIM 164910), RELA (MIM 164014), or RELB (MIM 604758) to form the NFKB complex. The NFKB complex is inhibited by I-kappa-B proteins (NFKBIA or NFKBIB, MIM 604495), which inactivate NF-kappa-B by trapping it in the cytoplasm.

Immunogen: A synthetic peptide of human IKB alpha

Applications: WB,IHC-P,IP

Recommended Dilutions: WB: 1/500-1/1000 IHC: 1/50-1/100 IP: 1/20

Host Species: Rabbit

Clonality: Rabbit Monoclonal

Clone ID: R08-9E4

MW: Calculated MW: 36 kDa; Observed MW: 39 kDa

Isotype: IgG

Purification: Affinity Purified

Species Reactivity: Human,Mouse,Rat

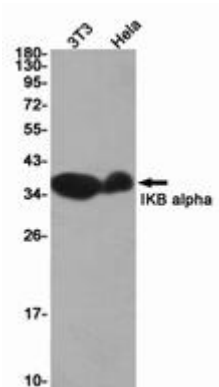
Conjugation: Unconjugated

Modification: Unmodified

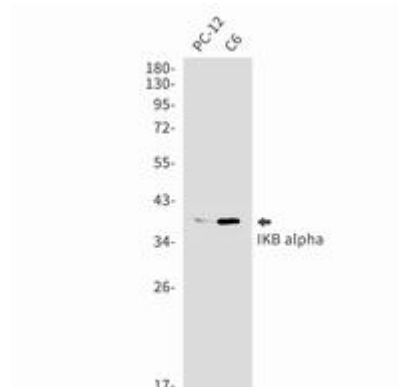
Constituents: PBS (without Mg²⁺ and Ca²⁺), pH 7.3 containing 50% glycerol, 0.5% BSA and 0.02% sodium azide

Research Areas: Epigenetics and Nuclear Signaling

Storage & Shipping: Store at -20°C. Avoid repeated freezing and thawing



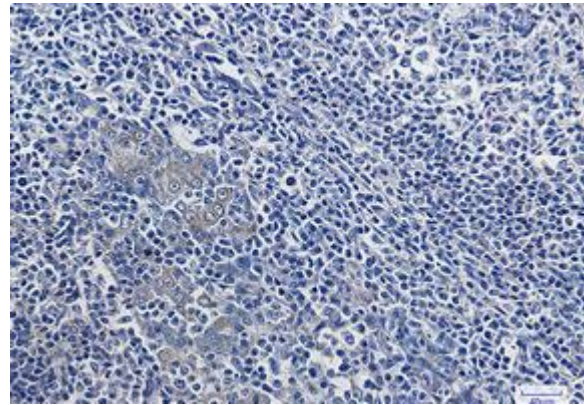
Western blot analysis of IKB alpha in 3T3, Hela lysates using IKB alpha antibody



Western blot analysis of IKB alpha in PC-12, C6 lysates using IKB alpha antibody.



Western blot analysis of IKB alpha in Raw264.7 lysates using IKB alpha antibody.



Immunohistochemistry analysis of paraffin-embedded Human tonsil using IKB alpha antibody. High-pressure and temperature Sodium Citrate pH 6.0 was used for antigen retrieval.