

IGSF6 RABBIT PAB

Cat.#: S216573

Product Name: Anti-IGSF6 Rabbit Polyclonal Antibody

Synonyms: DORA

UNIPROT ID: O95976 (Gene Accession - BC017844)

Background: Predicted to enable transmembrane signaling receptor activity. Predicted to be involved in cell surface receptor signaling pathway and immune response. Predicted to be integral component of plasma membrane.

Immunogen: Fusion protein of human IGSF6

Applications: ELISA, IHC

Recommended Dilutions: IHC: 50-200; ELISA: 5000-10000

Host Species: Rabbit

Clonality: Rabbit Polyclonal

Isotype: Immunogen-specific rabbit IgG

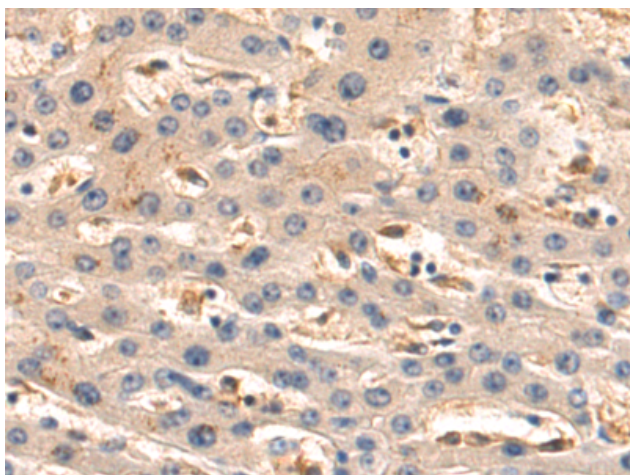
Purification: Antigen affinity purification

Species Reactivity: Human

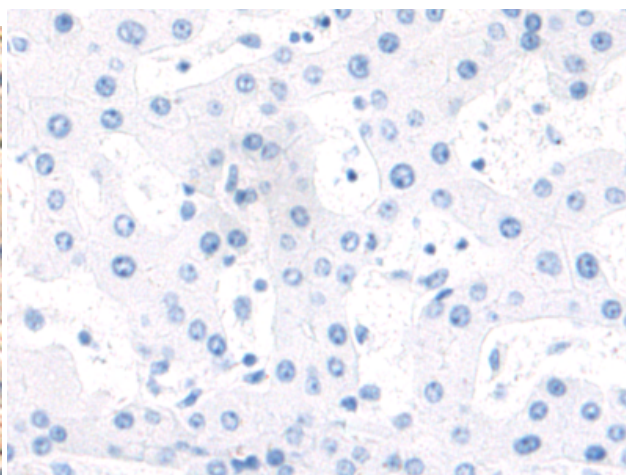
Constituents: PBS (without Mg²⁺ and Ca²⁺), pH 7.4, 150 mM NaCl, 0.05% Sodium Azide and 40% glycerol

Research Areas: Immunology

Storage & Shipping: Store at -20°C. Avoid repeated freezing and thawing



Immunohistochemistry analysis of paraffin embedded Human liver cancer tissue using 216573(IGSF6 Antibody) at a dilution of 1/80(Cytoplasm).



In comparison with the IHC on the left, the same paraffin-embedded Human liver cancer tissue is first treated with the fusion protein and then with 216573(Anti-IGSF6 Antibody) at dilution 1/80.