

IGFBP3 RABBIT PAB

Cat.#: N225040

Product Name: Anti-IGFBP3 Rabbit pAb

Synonyms: IGFBP3; IBP3; Insulin-like growth factor-binding protein 3; IBP-3; IGF-binding protein 3; IGFBP-3

UNIPROT ID: P17936

Background: IGF-binding proteins prolong the half-life of the IGFs and have been shown to either inhibit or stimulate the growth promoting effects of the IGFs on cell culture.

Immunogen: The antiserum was produced against synthesized peptide derived from the Internal region of human IGFBP3. AA range:211-260

Applications: WB,IHC-P,ELISA

Recommended Dilutions: WB: 1/500-1/1000 IHC: 1/50-1/100 ELISA: 1/10000

Host Species: Rabbit

Clonality: Rabbit Polyclonal

Clone ID: -

MW: Calculated MW: 32 kDa; Observed MW: 32 kDa

Isotype: IgG

Purification: Affinity Purified

Species Reactivity: Human,Mouse,Rat

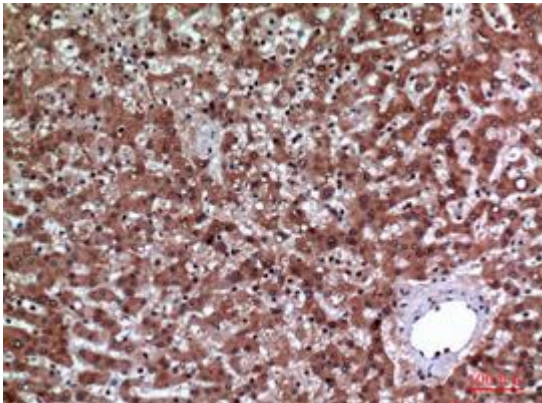
Conjugation: Unconjugated

Modification: Unmodified

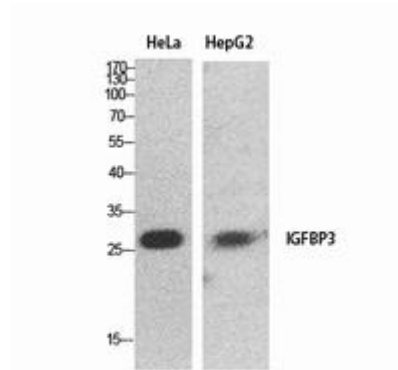
Constituents: PBS (without Mg²⁺ and Ca²⁺), pH 7.3 containing 50% glycerol, 0.5% BSA and 0.02% sodium azide

Research Areas: Cell Biology

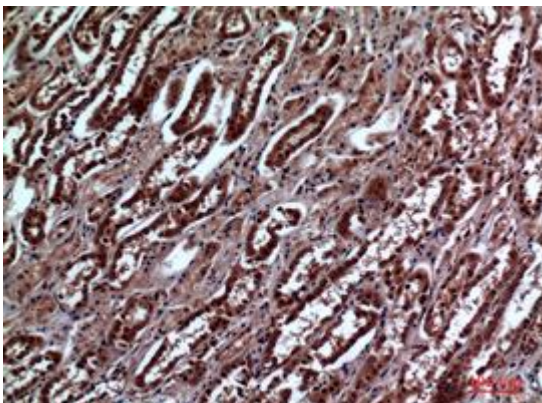
Storage & Shipping: Store at -20°C. Avoid repeated freezing and thawing



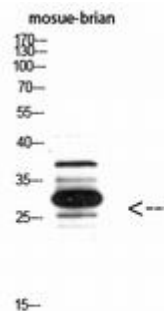
Immunohistochemistry analysis of paraffin-embedded Human liver using IGFBP3 antibody. High-pressure and temperature Sodium Citrate pH 6.0 was used for antigen retrieval.



Western blot analysis of IGFBP3 in HeLa, HepG2 lysates using IGFBP3 antibody.



Immunohistochemistry analysis of paraffin-embedded Human kidney using IGFBP3 antibody. High-pressure and temperature Sodium Citrate pH 6.0 was used for antigen retrieval.



Western blot analysis of IGFBP3 in mouse brain lysates using IGFBP3 antibody.