

## IGF1 RECEPTOR RABBIT PAB

**Cat.#:** N225286

**Product Name:** Anti-IGF1 Receptor Rabbit pAb

**Synonyms:** IGF1R; Insulin-like growth factor 1 receptor; Insulin-like growth factor I receptor; IGF-I receptor; CD antigen CD221

**UNIPROT ID:** P08069

**Background:** This receptor binds insulin-like growth factor with a high affinity. It has tyrosine kinase activity. The insulin-like growth factor I receptor plays a critical role in transformation events. Cleavage of the precursor generates alpha and beta subunits. It is highly overexpressed in most malignant tissues where it functions as an anti-apoptotic agent by enhancing cell survival. Alternatively spliced transcript variants encoding distinct isoforms have been found for this gene. [provided by RefSeq, May 2014]

**Immunogen:** Peptide sequence around aa.1159~1163 (D-I-Y-E-T) derived from Human IGF-1R .

**Applications:** WB,IHC-P,ICC/IF

**Recommended Dilutions:** WB: 1/500-1/1000 IHC: 1/50-1/100 IF: 1/50-1/200

**Host Species:** Rabbit

**Clonality:** Rabbit Polyclonal

**Clone ID:** -

**MW:** Calculated MW: 155 kDa; Observed MW: 95,200 kDa

**Isotype:** IgG

**Purification:** Affinity Purified

**Species Reactivity:** Human,Mouse,Rat

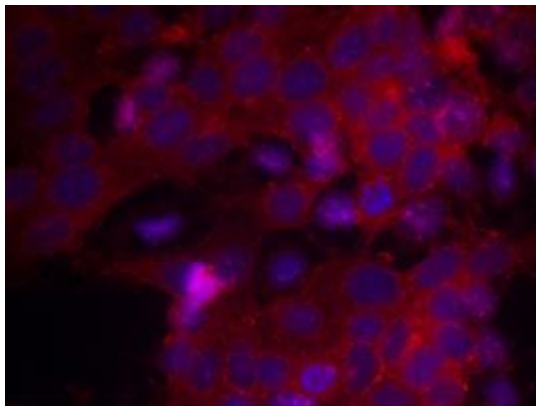
**Conjugation:** Unconjugated

**Modification:** Unmodified

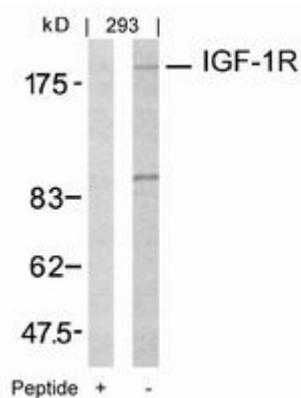
**Constituents:** PBS (without Mg<sup>2+</sup> and Ca<sup>2+</sup>), pH 7.3 containing 50% glycerol, 0.5% BSA and 0.02% sodium azide

**Research Areas:** Signal Transduction

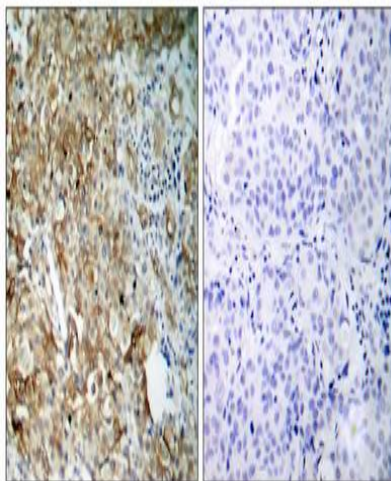
**Storage & Shipping:** Store at -20°C. Avoid repeated freezing and thawing



Immunofluorescence analysis of IGF1 Receptor in MCF using IGF1 Receptor antibody.



Western blot analysis of IGF1 Receptor in 293 lysates using IGF1 Receptor antibody. and the same antibody. preincubated with blocking peptide.



Immunohistochemistry analysis of paraffin-embedded Human breast carcinoma tissue using IGF1 Receptor antibody(left) or the same antibody preincubated with blocking peptide (right).High-pressure and temperature Sodium Citrate pH 6.0 was used for antigen retrieval.