

## IGF-1R MAB (TEPROTUMUMAB)

**Cat.#:** 28577

**Product Name:** Anti-IGF-1R(Teprotumumab) Monoclonal Antibody

**Synonyms:** CD221, IGF1R, IGFR, JTK13

**Description:** Anti-IGF-1R(teprotumumab ) Monoclonal Antibody

**Background:** Research grade biosimilar. Not for use in therapeutic or diagnostic procedures for humans or animals.

**Applications:** Flow Cyt

**Recommended Dilutions:** Flow Cyt 1:100

**Host Species:** Homo sapiens

**Isotype:** IgG1(E239D, M241L)

**Purification:** Purified from cell culture supernatant by affinity chromatography

**Species Reactivity:** Human IGF-1R

**Constituents:** Lyophilized from sterile PBS, pH 7.4. 5 % – 8% trehalose is added as protectants before lyophilization.

**Storage & Shipping:** Store at -20°C to -80°C for 12 months in lyophilized form. After reconstitution, if not intended for use within a month, aliquot and store at -80°C (Avoid repeated freezing and thawing).

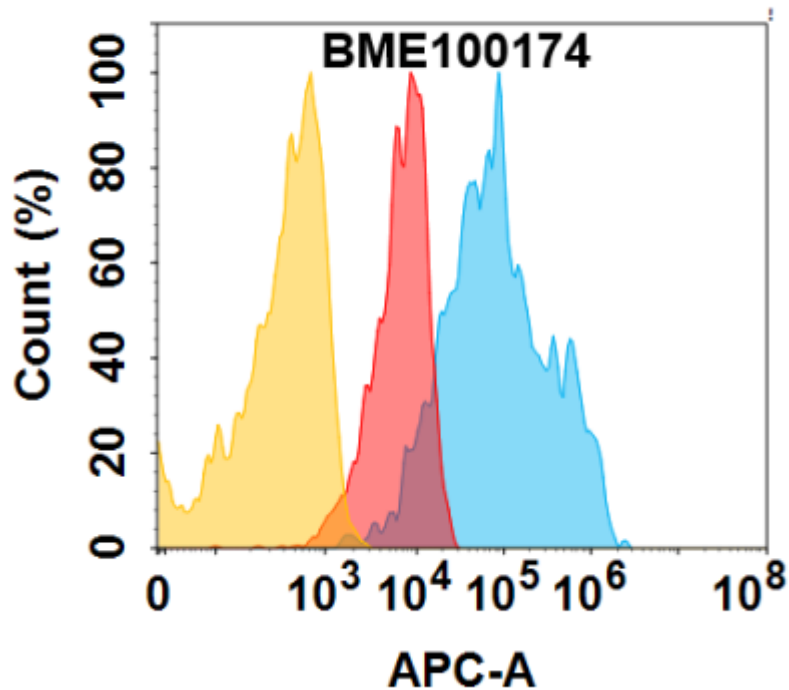


Figure 1. IGF-1R protein is highly expressed on the surface of Expi293 cell membrane. Flow cytometry analysis with 1 $\mu$ g/mL Anti-IGF-1R (teprotumumab biosimilar) mAb (28577) on Expi293 cells transfected with human IGF-1R (Blue histogram) or Expi293 transfected with irrelevant protein (Red histogram), and Isotype antibody on Expi293 transfected with irrelevant protein (Orange histogram)