

## **IGF-1R(DMC721) IGG1 CHIMERIC MAB**

目录: 28563

产品名称: IGF-1R(DMC721) IgG1 Chimeric Monoclonal Antibody

基因符号: CD221; IGFIR; IGFR; JTK13

描述: IGF-1R antibody(DMC721) IgG1 Chimeric Monoclonal Antibody

背景: This receptor binds insulin-like growth factor with a high affinity. It has tyrosine kinase activity. The insulin-like growth factor I receptor plays a critical role in transformation events. Cleavage of the precursor generates alpha and beta subunits. It is highly overexpressed in most malignant tissues where it functions as an apoptotic agent by enhancing cell survival. Alternatively spliced transcript variants encoding distinct isoforms have been found for this gene. [provided by RefSeq, May 2014]

经过测试的应用: Flow Cyt

推荐稀释度: Flow Cyt 1/100

种属反应性: Rabbit

亚型: Rabbit/Human Fc chimeric IgG1

纯化: Purified from cell culture supernatant by affinity chromatography

种属反应性: Human IGF-1R

成分: Lyophilized from sterile PBS, pH 7.4. 5 % – 8% trehalose is added as protectants before lyophilization.

储存和运输: Store at -20°C to -80°C for 12 months in lyophilized form. After reconstitution, if not intended for use within a month, aliquot and store at -80°C (Avoid repeated freezing and thawing).

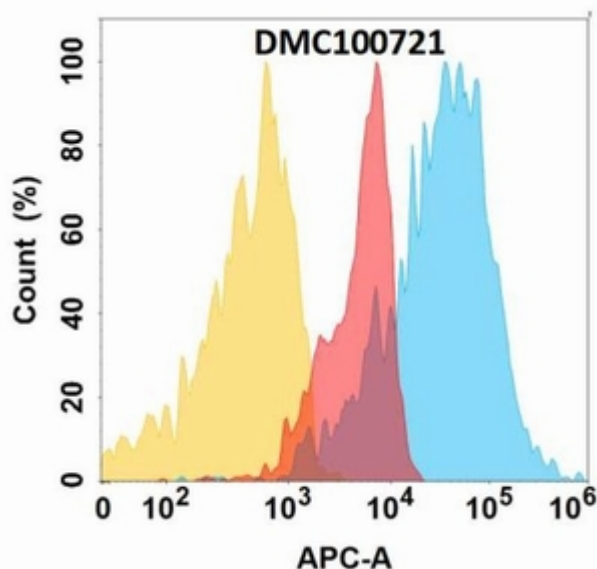


Figure 1. IGF-1R protein is highly expressed on the surface of Expi293 cell membrane. Flow cytometry analysis with IGF-1R (DMC721) mAb on Expi293 cells transfected with human IGF-1R (Blue histogram) or Expi293 transfected with irrelevant protein (Red histogram), and Isotype antibody on Expi293 transfected with irrelevant protein (Orange histogram).