

IFT22 RABBIT PAB

Cat.#: S218996

Product Name: Anti-IFT22 Rabbit Polyclonal Antibody

Synonyms: RABL5

UNIPROT ID: Q9H7X7 (Gene Accession - BC009823)

Background: Small GTPase-like component of the intraflagellar transport (IFT) complex B.

Immunogen: Fusion protein of human IFT22

Applications: ELISA, WB, IHC

Recommended Dilutions: IHC: 50-300;WB: 200-1000;ELISA: 5000-10000

Host Species: Rabbit

Clonality: Rabbit Polyclonal

Isotype: Immunogen-specific rabbit IgG

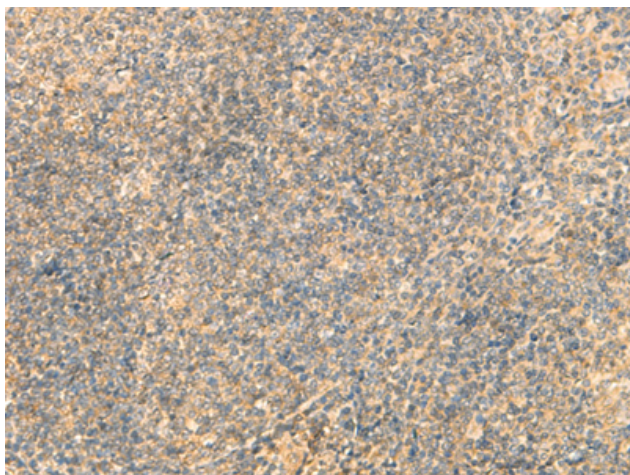
Purification: Antigen affinity purification

Species Reactivity: Human, Mouse, Rat

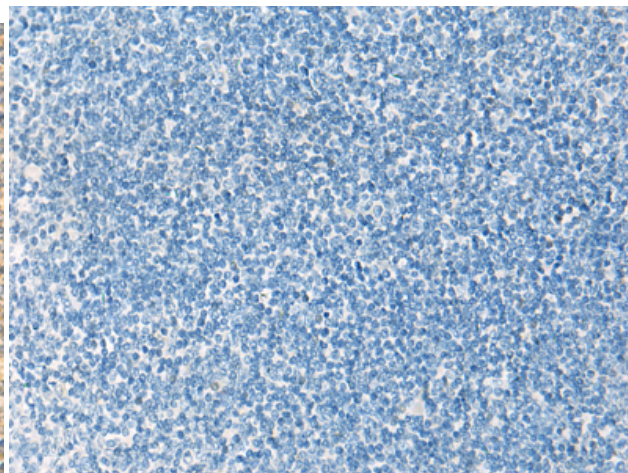
Constituents: PBS (without Mg²⁺ and Ca²⁺), pH 7.4, 150 mM NaCl, 0.05% Sodium Azide and 40% glycerol

Research Areas: Signal Transduction

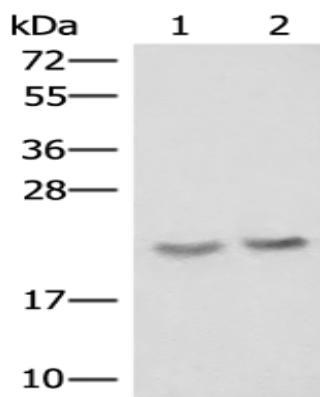
Storage & Shipping: Store at -20°C. Avoid repeated freezing and thawing



Immunohistochemistry analysis of paraffin embedded Human tonsil tissue using 218996 (IFT22 Antibody) at a dilution of 1/50 (Cytoplasm).



In comparison with the IHC on the left, the same paraffin-embedded Human tonsil tissue is first treated with the fusion protein and then with 218996 (Anti-IFT22 Antibody) at dilution 1/50.



Gel: 12% SDS-PAGE, Lysate: 40 μ g;
Lane 1-2: A172, A549 cell lysates;
Primary antibody: 218996 (IFT22 Antibody) at dilution 1/250;
Secondary antibody: Goat anti rabbit IgG at 1/8000 dilution;
Exposure time: 1 minute