

## IFNW1 RABBIT PAB

**Cat.#:** S218114

**Product Name:** Anti-IFNW1 Rabbit Polyclonal Antibody

**Synonyms:**

**UNIPROT ID:** P05000 (Gene Accession - BC117290 )

**Background:** The protein encoded by this gene is an interferon and possesses antiviral activity. The encoded protein binds to the interferon alpha/beta receptor but not to the interferon gamma receptor. This intronless gene has several pseudogenes spread throughout the genome.

**Immunogen:** Fusion protein of human IFNW1

**Applications:** ELISA, IHC

**Recommended Dilutions:** IHC: 200-400; ELISA: 5000-10000

**Host Species:** Rabbit

**Clonality:** Rabbit Polyclonal

**Isotype:** Immunogen-specific rabbit IgG

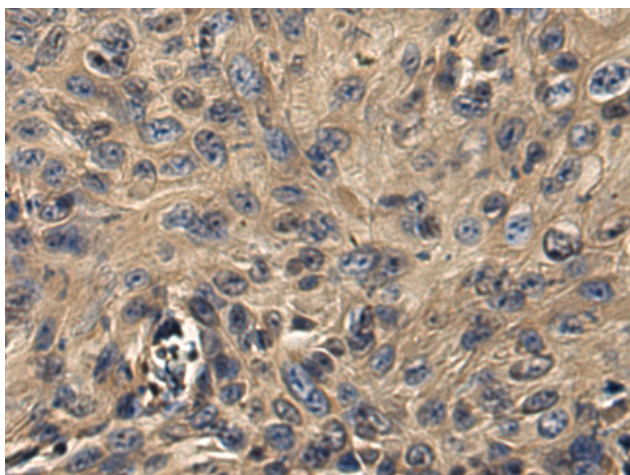
**Purification:** Antigen affinity purification

**Species Reactivity:** Human

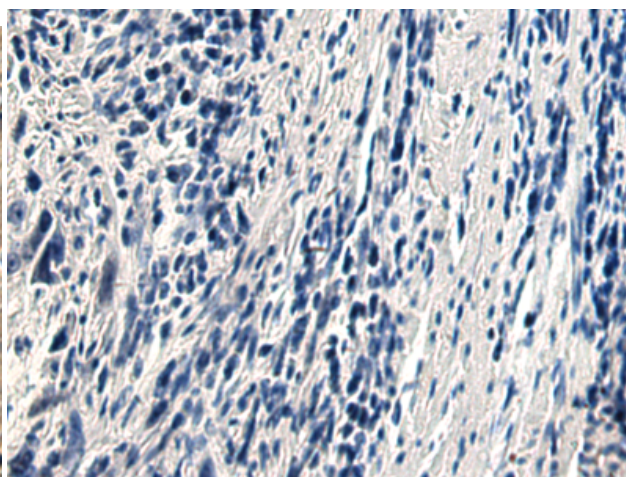
**Constituents:** PBS (without Mg<sup>2+</sup> and Ca<sup>2+</sup>), pH 7.4, 150 mM NaCl, 0.05% Sodium Azide and 40% glycerol

**Research Areas:** Immunology

**Storage & Shipping:** Store at -20°C. Avoid repeated freezing and thawing



Immunohistochemistry analysis of paraffin embedded Human esophagus cancer tissue using 218114(IFNW1 Antibody) at a dilution of 1/220(Secreted).



In comparison with the IHC on the left, the same paraffin-embedded Human esophagus cancer tissue is first treated with the fusion protein and then with 218114(Anti-IFNW1 Antibody) at dilution 1/220.