

IFNA1/IFNA13 RABBIT PAB

Cat.#: S222271

Product Name: Anti-IFNA1/IFNA13 Rabbit Polyclonal Antibody

Synonyms:

UNIPROT ID: P01562 (Gene Accession - NP_008831)

Background: Produced by macrophages, IFN-alpha have antiviral activities. Interferon stimulates the production of two enzymes: a protein kinase and an oligoadenylate synthetase.

Immunogen: Synthetic peptide of human IFNA1/IFNA13

Applications: ELISA, IHC

Recommended Dilutions: IHC: 30-150; ELISA: 5000-10000

Host Species: Rabbit

Clonality: Rabbit Polyclonal

Isotype: Immunogen-specific rabbit IgG

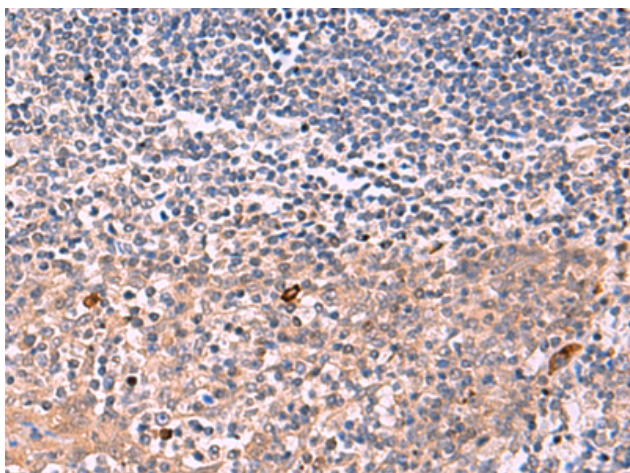
Purification: Antigen affinity purification

Species Reactivity: Human

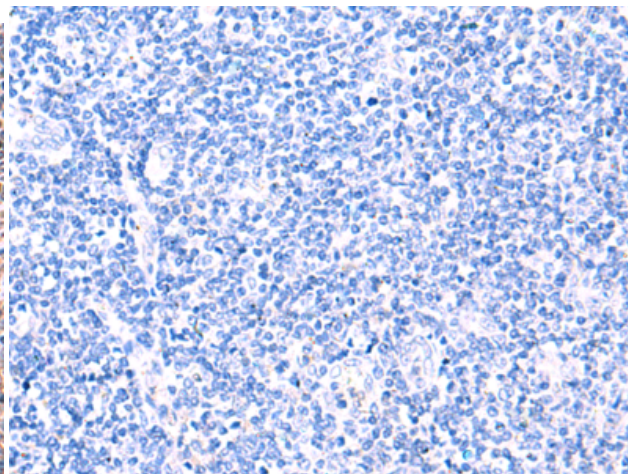
Constituents: PBS (without Mg²⁺ and Ca²⁺), pH 7.4, 150 mM NaCl, 0.05% Sodium Azide and 40% glycerol

Research Areas: Immunology

Storage & Shipping: Store at -20°C. Avoid repeated freezing and thawing



Immunohistochemistry analysis of paraffin embedded Human tonsil tissue using 222271(IFNA1/IFNA13 Antibody) at a dilution of 1/35(Cytoplasm).



In comparison with the IHC on the left, the same paraffin-embedded Human tonsil tissue is first treated with the synthetic peptide and then with 222271(Anti-IFNA1/IFNA13 Antibody) at dilution 1/35.