

IFI27 RABBIT PAB

Cat.#: S219189

Product Name: Anti-IFI27 Rabbit Polyclonal Antibody

Synonyms: P27; ISG12; FAM14D; ISG12A

UNIPROT ID: P40305 (Gene Accession - BC015492)

Background: Promotes cell death. Mediates IFN-induced apoptosis characterized by a rapid and robust release of cytochrome C from the mitochondria and activation of BAX and caspases 2, 3, 6, 8 and 9.

Immunogen: Fusion protein of human IFI27

Applications: ELISA, IHC

Recommended Dilutions: IHC: 100-200; ELISA: 5000-10000

Host Species: Rabbit

Clonality: Rabbit Polyclonal

Isotype: Immunogen-specific rabbit IgG

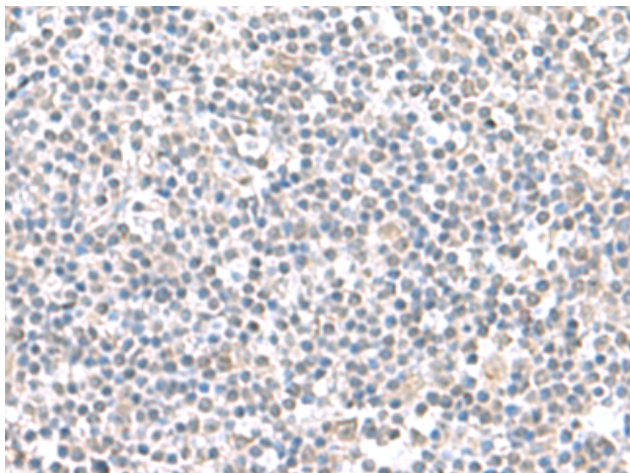
Purification: Antigen affinity purification

Species Reactivity: Human

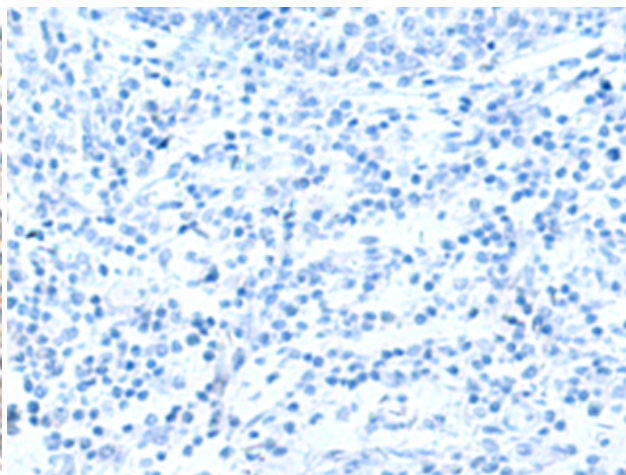
Constituents: PBS (without Mg²⁺ and Ca²⁺), pH 7.4, 150 mM NaCl, 0.05% Sodium Azide and 40% glycerol

Research Areas: Immunology

Storage & Shipping: Store at -20°C. Avoid repeated freezing and thawing



Immunohistochemistry analysis of paraffin embedded Human tonsil tissue using 219189(IFI27 Antibody) at a dilution of 1/100(Cytoplasm).



In comparison with the IHC on the left, the same paraffin-embedded Human tonsil tissue is first treated with the fusion protein and then with 219189(Anti-IFI27 Antibody) at dilution 1/100.