

## IDO2 RABBIT PAB

**Cat.#:** S218122

**Product Name:** Anti-IDO2 Rabbit Polyclonal Antibody

**Synonyms:** INDOL1

**UNIPROT ID:** Q6ZQW0 (Gene Accession - BC113496 )

**Background:** Along with the enzymes encoded by the INDO (MIM 147435) and TDO2 (MIM 191070) genes, the enzyme encoded by the INDOL1 gene metabolizes tryptophan in the kynurenine pathway.

**Immunogen:** Fusion protein of human IDO2

**Applications:** ELISA, WB, IHC

**Recommended Dilutions:** IHC: 50-200;WB: 500-2000;ELISA: 5000-10000

**Host Species:** Rabbit

**Clonality:** Rabbit Polyclonal

**Isotype:** Immunogen-specific rabbit IgG

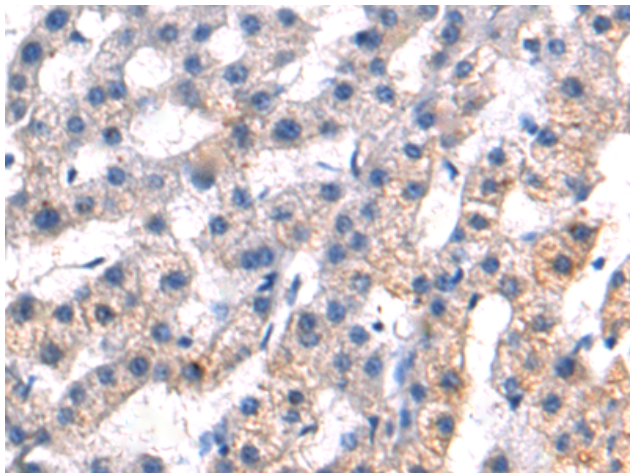
**Purification:** Antigen affinity purification

**Species Reactivity:** Human, Mouse

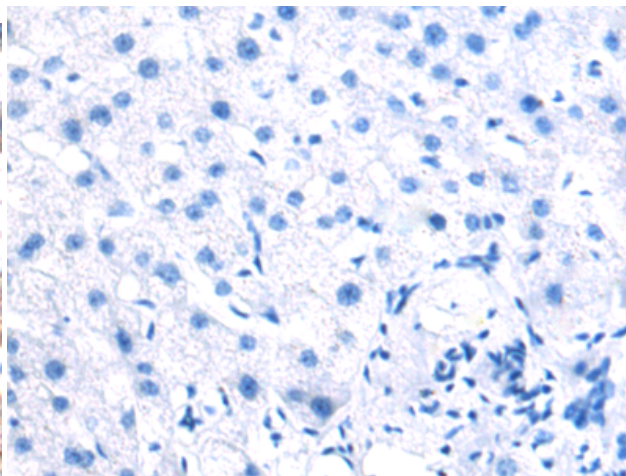
**Constituents:** PBS (without Mg<sup>2+</sup> and Ca<sup>2+</sup>), pH 7.4, 150 mM NaCl, 0.05% Sodium Azide and 40% glycerol

**Research Areas:** Metabolism

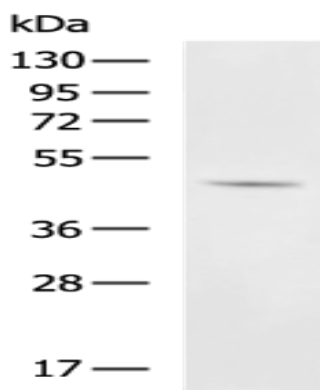
**Storage & Shipping:** Store at -20°C. Avoid repeated freezing and thawing



Immunohistochemistry analysis of paraffin embedded Human liver cancer tissue using 218122(IDO2 Antibody) at a dilution of 1/90(Cytoplasm).



In comparison with the IHC on the left, the same paraffin-embedded Human liver cancer tissue is first treated with the fusion protein and then with 218122(Anti-IDO2 Antibody) at dilution 1/90.



Gel: 8%SDS-PAGE, Lysate: 40  $\mu$ g;  
Lane: Mouse kidney tissue lysate;  
Primary antibody: 218122(IDO2 Antibody) at dilution 1/1350;  
Secondary antibody: HRP-conjugated Goat anti rabbit IgG at 1/5000 dilution;  
Exposure time: 1 minute