

## IDO 2 RABBIT PAB

**Cat.#:** N225189

**Product Name:** Anti-IDO 2 Rabbit pAb

**Synonyms:** IDO2; INDOL1; Indoleamine 2; 3-dioxygenase 2; IDO-2; Indoleamine 2; 3-dioxygenase-like protein 1; Indoleamine-pyrrole 2; 3-dioxygenase-like protein 1

**UNIPROT ID:** Q6ZQW0

**Background:** INDOL1 is also known as IDO2 (indoleamine 2,3-dioxygenase 2) and is a 407 amino acid protein that is expressed in various tissues, including liver, small intestine, spleen, placenta, thymus, lung, brain, kidney, colon and dendritic cells. INDOL1 is selectively inhibited by D-1MT (1-methyl-d-tryptophan), which also inhibits IDO (indoleamine 2,3-dioxygenase) and is significant because IDO expression causes suppression of T cell responses to tumors in dendritic cells. The inhibition of INDOL1 by D-1MT suggests a common function in immunomodulation. In the human INDOL1 gene, two single nucleotide polymorphisms have been detected which abolish the enzymatic function of INDOL1.

**Immunogen:** The antiserum was produced against synthesized peptide derived from the Internal region of human IDO2. AA range:101-150

**Applications:** WB,ELISA

**Recommended Dilutions:** WB: 1/500-1/1000 ELISA: 1/10000

**Host Species:** Rabbit

**Clonality:** Rabbit Polyclonal

**Clone ID:** -

**MW:** Calculated MW: 47 kDa; Observed MW: 47 kDa

**Isotype:** IgG

**Purification:** Affinity Purified

**Species Reactivity:** Human

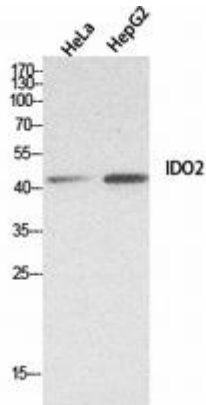
**Conjugation:** Unconjugated

**Modification:** Unmodified

**Constituents:** PBS (without Mg<sup>2+</sup> and Ca<sup>2+</sup>), pH 7.3 containing 50% glycerol, 0.5% BSA and 0.02% sodium azide

**Research Areas:** Signal Transduction

**Storage & Shipping:** Store at -20°C. Avoid repeated freezing and thawing



Western blot analysis of IDO 2 in HeLa, HepG2 lysates using IDO 2 antibody.