

## ICOSLG RABBIT PAB

**Cat.#:** S213390

**Product Name:** Anti-ICOSLG Rabbit Polyclonal Antibody

**Synonyms:** B7h; B7H2; GL50; B7-H2; B7RP1; CD275; ICOSL; LICOS; B7RP-1; ICOS-L

**UNIPROT ID:** O75144 (Gene Accession - NP\_056074 )

**Background:** Enables identical protein binding activity. Predicted to be involved in T cell receptor signaling pathway and positive regulation of interleukin-4 production. Located in cytoplasmic ribonucleoprotein granule and plasma membrane.

**Immunogen:** Synthetic peptide of human ICOSLG

**Applications:** ELISA, WB, IHC

**Recommended Dilutions:** IHC: 50-200;WB: 500-2000;ELISA: 5000-10000

**Host Species:** Rabbit

**Clonality:** Rabbit Polyclonal

**Isotype:** Immunogen-specific rabbit IgG

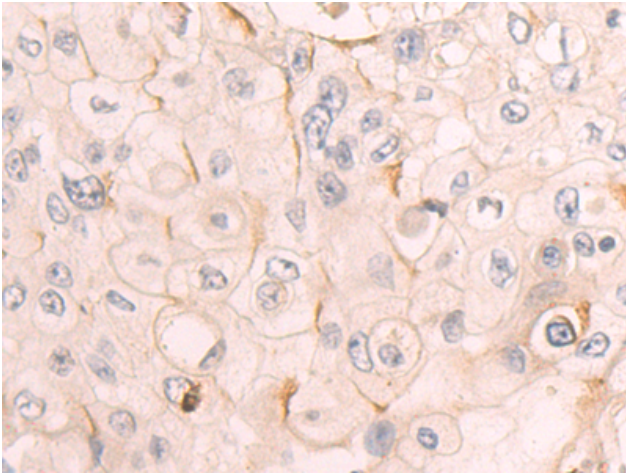
**Purification:** Antigen affinity purification

**Species Reactivity:** Human

**Constituents:** PBS (without Mg<sup>2+</sup> and Ca<sup>2+</sup>), pH 7.4, 150 mM NaCl, 0.05% Sodium Azide and 40% glycerol

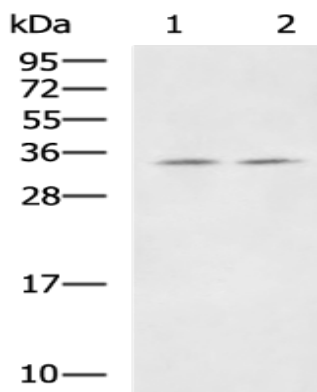
**Research Areas:** Immunology

**Storage & Shipping:** Store at -20°C. Avoid repeated freezing and thawing



✘ In comparison with the IHC on the left, the same paraffin-embedded Human esophagus cancer tissue is first treated with the synthetic peptide and then with 213390 (Anti-ICOSLG Antibody) at dilution 1/50.

Immunohistochemistry analysis of paraffin embedded Human esophagus cancer tissue using 213390 (ICOSLG Antibody) at a dilution of 1/50 (Cytoplasm and Cell membrane).



Gel: 12% SDS-PAGE, Lysate: 40 µg;  
Lane 1-2: A172 and HUVEC cell lysates;  
Primary antibody: 213390 (ICOSLG Antibody) at dilution 1/650;  
Secondary antibody: HRP-conjugated Goat anti rabbit IgG at 1/5000 dilution;  
Exposure time: 2 minutes