

ICAM3 RABBIT MAB

Cat.#: N263377

Product Name: Anti-ICAM3 Rabbit Monoclonal Antibody

Synonyms: CD50; CDW50; ICAM-R

UNIPROT ID: P32942

Background: ICAM proteins are ligands for the leukocyte adhesion protein LFA-1 (integrin alpha-L/beta-2).

Immunogen: A synthetic peptide of human ICAM3

Applications: WB,IHC-P,IP

Recommended Dilutions: WB: 1/500-1/1000 IHC: 1/50-1/100 IP: 1/20

Host Species: Rabbit

Clonality: Rabbit Monoclonal

Clone ID: R08-0D3

MW: Calculated MW: 60 kDa; Observed MW: 110-160 kDa

Isotype: IgG

Purification: Affinity Purified

Species Reactivity: Human,Rat

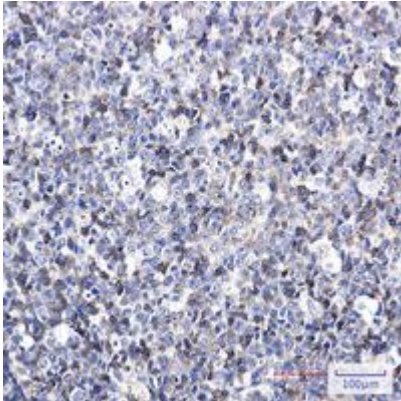
Conjugation: Unconjugated

Modification: Unmodified

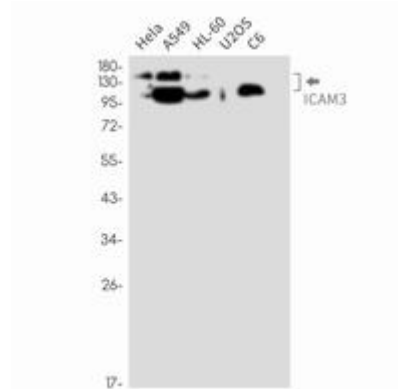
Constituents: PBS (without Mg²⁺ and Ca²⁺), pH 7.3 containing 50% glycerol, 0.5% BSA and 0.02% sodium azide

Research Areas: Signal Transduction

Storage & Shipping: Store at -20°C. Avoid repeated freezing and thawing



Immunohistochemistry analysis of paraffin-embedded Human tonsil using ICAM3 antibody. High-pressure and temperature Sodium Citrate pH 6.0 was used for antigen retrieval.



Western blot analysis of ICAM3 in HeLa, A549, HL-60, U2OS, C6 lysates using ICAM3 antibody.