

ICAM2 RABBIT MAB

Cat.#: N263376

Product Name: Anti-ICAM2 Rabbit Monoclonal Antibody

Synonyms: CD102; Ly-60; Icam-2

UNIPROT ID: P35330

Background: ICAM proteins are ligands for the leukocyte adhesion protein LFA-1 (integrin alpha-L/beta-2). ICAM2 may play a role in lymphocyte recirculation by blocking LFA-1-dependent cell adhesion. It mediates adhesive interactions important for antigen-specific immune response, NK-cell mediated clearance, lymphocyte recirculation, and other cellular interactions important for immune response and surveillance.

Immunogen: Recombinant protein of mouse ICAM2

Applications: WB,IHC-P,IP

Recommended Dilutions: WB: 1/500-1/1000 IHC: 1/50-1/100 IP: 1/20

Host Species: Rabbit

Clonality: Rabbit Monoclonal

Clone ID: R06-7A3

MW: Calculated MW: 31 kDa; Observed MW: 50-60 kDa

Isotype: IgG

Purification: Affinity Purified

Species Reactivity: Human,Mouse

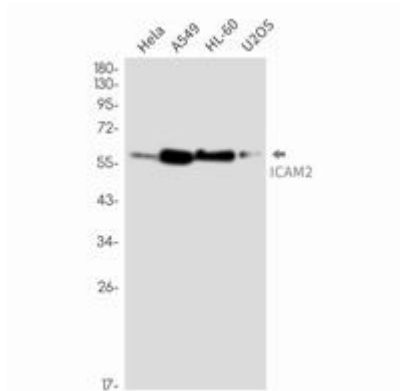
Conjugation: Unconjugated

Modification: Unmodified

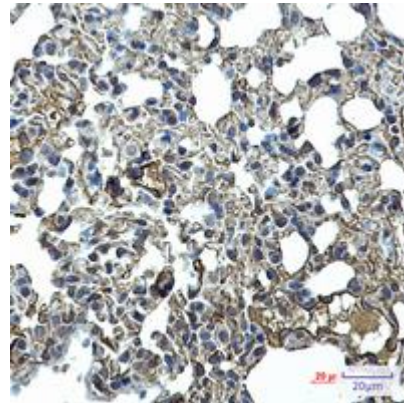
Constituents: PBS (without Mg²⁺ and Ca²⁺), pH 7.3 containing 50% glycerol, 0.5% BSA and 0.02% sodium azide

Research Areas: -

Storage & Shipping: Store at -20°C. Avoid repeated freezing and thawing



Western blot analysis of ICAM2 in HeLa, A549, HL-60, U2OS lysates using ICAM2 antibody.



Immunohistochemistry analysis of paraffin-embedded mouse lung using ICAM2 antibody. High-pressure and temperature Sodium Citrate pH 6.0 was used for antigen retrieval.