

HUMAN SERUM ALBUMIN (7D1) MOUSE MAB

Cat.#: N261406

Product Name: Anti-Human Serum Albumin (7D1) Mouse Monoclonal Antibody

Synonyms: ALB; ALBU_HUMAN; Albumin (32 AA); Albumin (AA 34); Albumin; Analbuminemia; Bisalbuminemia; Cell growth inhibiting protein 42; DKFZp779N1935; Dysalbuminemic hyperthyroxinemia; Growth inhibiting protein 20; HSA; Hyperthyroxinemia dysalbuminemic; Serum albumin.

UNIPROT ID: P02768

Background: Albumin is a soluble, monomeric protein which comprises about one-half of the blood serum protein. Albumin functions primarily as a carrier protein for steroids, fatty acids, and thyroid hormones and plays a role in stabilizing extracellular fluid volume.

Immunogen: Purified Human serum albumin.

Applications: WB,ELISA

Recommended Dilutions: WB: 1/500-1/1000 ELISA: 1/10000

Host Species: Mouse

Clonality: Mouse Monoclonal

Clone ID: 7D1-C10-E7

MW: Calculated MW: 69 kDa; Observed MW: 69 kDa

Isotype: IgG1

Purification: Affinity Purified

Species Reactivity: Human

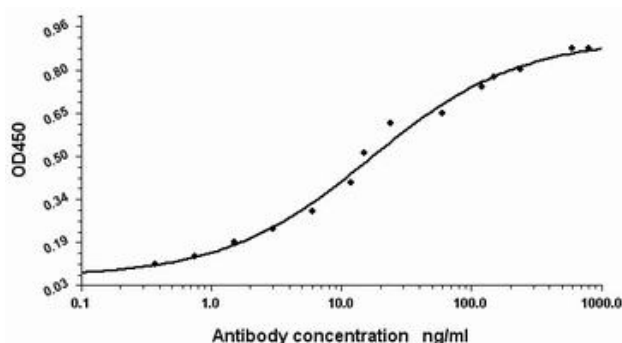
Conjugation: Unconjugated

Modification: Unmodified

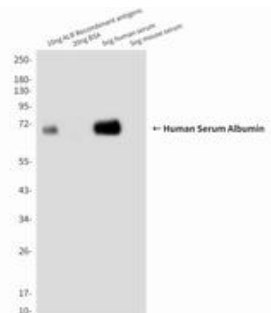
Constituents: PBS (without Mg²⁺ and Ca²⁺), pH 7.3 containing 50% glycerol, 0.5% BSA and 0.02% sodium azide

Research Areas: Cardiovascular

Storage & Shipping: Store at -20°C. Avoid repeated freezing and thawing



Indirect ELISA assay for antiHuman Serum Albumin antibody. Antigen coating concentration: 8ug/ml.



Western blot analysis of Human Serum Albumin in 0.5nl Human serum and 10ng ALB Recombinant antigens lysates using Human Serum Albumin antibody.



Product Description

Pioneering GTPase and Oncogene Product Development since 2010
