

HUMAN SERUM ALBUMIN (1A8) MOUSE MAB

Cat.#: N261404

Product Name: Anti-Human Serum Albumin (1A8) Mouse Monoclonal Antibody

Synonyms: ALB; ALBU_HUMAN; Albumin (32 AA); Albumin (AA 34); Albumin; Analbuminemia; Bisalbuminemia; Cell growth inhibiting protein 42; DKFZp779N1935; Dysalbuminemic hyperthyroxinemia; Growth inhibiting protein 20; HSA; Hyperthyroxinemia dysalbuminemic; Serum albumin.

UNIPROT ID: P02768

Background: Albumin is a soluble, monomeric protein which comprises about one-half of the blood serum protein. Albumin functions primarily as a carrier protein for steroids, fatty acids, and thyroid hormones and plays a role in stabilizing extracellular fluid volume.

Immunogen: Purified Human serum albumin.

Applications: WB,ELISA

Recommended Dilutions: WB: 1/500-1/1000 ELISA: 1/10000

Host Species: Mouse

Clonality: Mouse Monoclonal

Clone ID: 1A8-C5-B4

MW: Calculated MW: 69 kDa; Observed MW: 69 kDa

Isotype: IgG1

Purification: Affinity Purified

Species Reactivity: Human

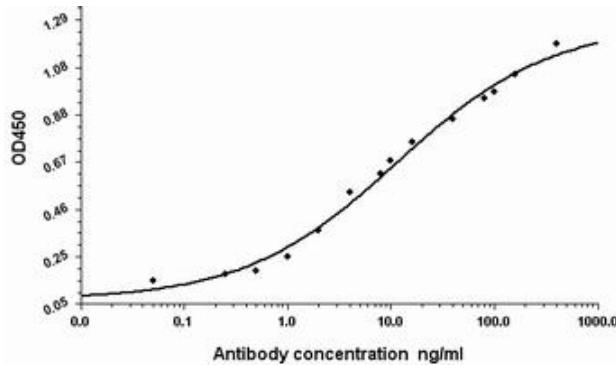
Conjugation: Unconjugated

Modification: Unmodified

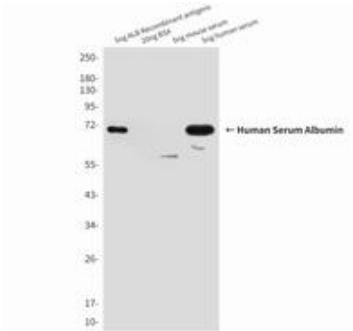
Constituents: PBS (without Mg²⁺ and Ca²⁺), pH 7.3 containing 50% glycerol, 0.5% BSA and 0.02% sodium azide

Research Areas: Cardiovascular

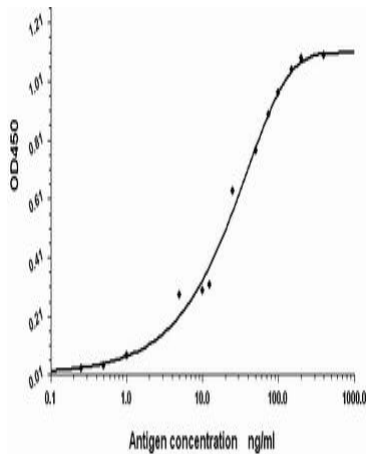
Storage & Shipping: Store at -20°C. Avoid repeated freezing and thawing



Indirect ELISA assay for antiHuman Serum Albumin antibody. Antigen coating concentration: 8ug/ml.



Western blot analysis of Human Serum Albumin in 0.5nl Human serum and 5ng ALB Recombinant antigens lysates using Human Serum Albumin antibody.



Standard Curve for Human Serum Albumin (Analyte: Human Serum Albumin protein); using Capture antibody mouse monoclonal [1A8C5B4] to Human Serum Albumin at 8ug/ml and Detector antibody Rabbit polyclonal antiserum to Human Serum Albumin.