

HUMAN KAPPA LIGHT CHAIN RABBIT PAB

Cat.#: N225795

Product Name: Anti-Human kappa Light Chain Rabbit pAb

Synonyms: HCAK1; Ig kappa chain C region; IGKC; IMMUNOGLOBULIN InV; Km

UNIPROT ID: P01834

Background: Constant region of immunoglobulin light chains. Immunoglobulins, also known as antibodies, are membrane-bound or secreted glycoproteins produced by B lymphocytes. In the recognition phase of humoral immunity, the membrane-bound immunoglobulins serve as receptors which, upon binding of a specific antigen, trigger the clonal expansion and differentiation of B lymphocytes into immunoglobulins-secreting plasma cells.

Immunogen: A synthesized peptide derived from human Kappa light chain

Applications: WB,IHC-P,ICC/IF,IP

Recommended Dilutions: WB: 1/500-1/1000 IHC: 1/50-1/100 IF: 1/50-1/200 IP: 1/20

Host Species: Rabbit

Clonality: Rabbit Polyclonal

Clone ID: -

MW: Calculated MW: 12 kDa; Observed MW: 25 kDa

Isotype: IgG

Purification: Affinity Chromatography

Species Reactivity: Human

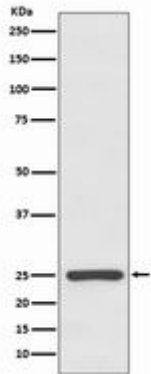
Conjugation: Unconjugated

Modification: Unmodified

Constituents: PBS (without Mg²⁺ and Ca²⁺), pH 7.3 containing 50% glycerol, 0.5% BSA and 0.02% sodium azide

Research Areas: Immunology

Storage & Shipping: Store at -20°C. Avoid repeated freezing and thawing



Western blot analysis of Human Kappa light chain in Human plasma lysates using Human kappa Light Chain antibody.