

HUMAN KAPPA LIGHT CHAIN RABBIT MAB

Cat.#: N263631

Product Name: Anti-Human kappa Light Chain Rabbit Monoclonal Antibody

Synonyms: HCAK1; Ig kappa chain C region; IGKC; IMMUNOGLOBULIN InV; Km

UNIPROT ID: P01834

Background: Constant region of immunoglobulin light chains. Immunoglobulins, also known as antibodies, are membrane-bound or secreted glycoproteins produced by B lymphocytes. In the recognition phase of humoral immunity, the membrane-bound immunoglobulins serve as receptors which, upon binding of a specific antigen, trigger the clonal expansion and differentiation of B lymphocytes into immunoglobulin-secreting plasma cells.

Immunogen: A synthesized peptide derived from human Human Kappa Chain

Applications: WB,IHC-F,IHC-P,ICC/IF

Recommended Dilutions: WB: 1/500-1/1000 IHC: 1/50-1/100 IF: 1/50-1/200

Host Species: Rabbit

Clonality: Rabbit Monoclonal

Clone ID: R02-7H3

MW: Calculated MW: 12 kDa; Observed MW: 26 kDa

Isotype: IgG

Purification: Affinity Purified

Species Reactivity: Human

Conjugation: Unconjugated

Modification: Unmodified

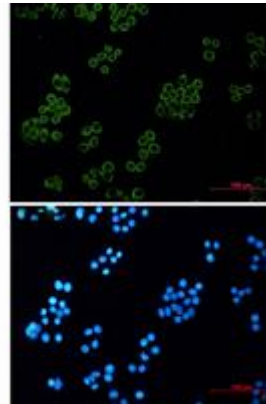
Constituents: PBS (without Mg²⁺ and Ca²⁺), pH 7.3 containing 50% glycerol, 0.5% BSA and 0.02% sodium azide

Research Areas: Immunology

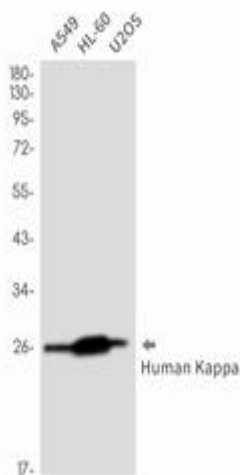
Storage & Shipping: Store at -20°C. Avoid repeated freezing and thawing



Immunohistochemistry analysis of paraffin-embedded Human tonsil tissue using Human Kappa Light Chain antibody. High-pressure and temperature Sodium Citrate pH 6.0 was used for antigen retrieval.



Immunocytochemistry analysis of Hela using Human kappa Light Chain antibody, and DAPI (blue).



Western blot analysis of Human Kappa Light Chain in A549, HL-60, U2OS lysates using Human Kappa Light Chain antibody. Observed band size: 26kDa.