

HUMAN IGM (3E12) MOUSE MAB

Cat.#: N261139

Product Name: Anti-Human IgM (3E12) Mouse Monoclonal Antibody

Synonyms: Ig mu chain C region

UNIPROT ID: P01871

Background: IgM measurement yields information about the body's immediate resistance and response to infection as well as information related to specific diseases. Decreased levels are associated with immune deficiency states, hereditary deficiencies, and myeloma. Increased levels can be associated with Waldenstrom's macroglobulinemia, chronic infection and hepatocellular disease.

Immunogen: Purified recombinant full length of human IgM heavy chain protein expressed in E.coli.

Applications: ELISA,IHC-P

Recommended Dilutions: IHC: 1/50-1/100 ELISA: 1/10000

Host Species: Mouse

Clonality: Mouse Monoclonal

Clone ID: 3E12-H4-G4

MW: -

Isotype: IgG2a

Purification: Affinity Purified

Species Reactivity: Human

Conjugation: Unconjugated

Modification: Unmodified

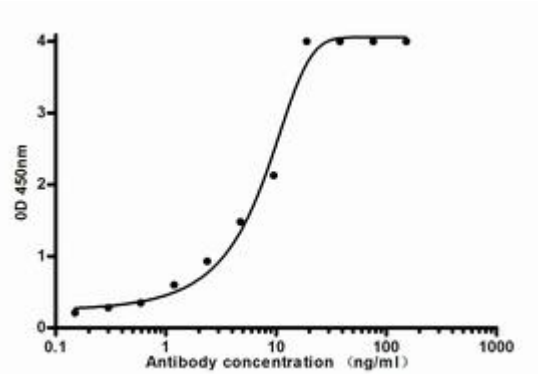
Constituents: PBS (without Mg²⁺ and Ca²⁺), pH 7.3 containing 50% glycerol, 0.5% BSA and 0.02% sodium azide

Research Areas: Immunology

Storage & Shipping: Store at -20°C. Avoid repeated freezing and thawing



Immunohistochemical analysis of paraffin-embedded Human tonsils using Human IgM (3E12) antibody. High-pressure and temperature Sodium Citrate pH 6.0 was used for antigen retrieval.



Indirect ELISA assay for mouse Human IgM antibody. Antigen coating concentration: 2ug/ml.