

HSPB2 RABBIT PAB

Cat.#: S216563

Product Name: Anti-HSPB2 Rabbit Polyclonal Antibody

Synonyms: MKBP; HSP27; Hs.78846; LOH11CR1K

UNIPROT ID: Q16082 (Gene Accession - BC109393)

Background: The protein encoded by this gene belongs to the superfamily of small heat-shock proteins containing a conservative alpha-crystallin domain at the C-terminal part of the molecule. The protein is expressed preferentially in the heart and skeletal muscle. This protein regulates Myotonic Dystrophy Protein Kinase, which plays an important role in maintenance of muscle structure and function.

Immunogen: Fusion protein of human HSPB2

Applications: ELISA, WB, IHC

Recommended Dilutions: IHC: 100-200;WB: 500-2000;ELISA: 5000-10000

Host Species: Rabbit

Clonality: Rabbit Polyclonal

Isotype: Immunogen-specific rabbit IgG

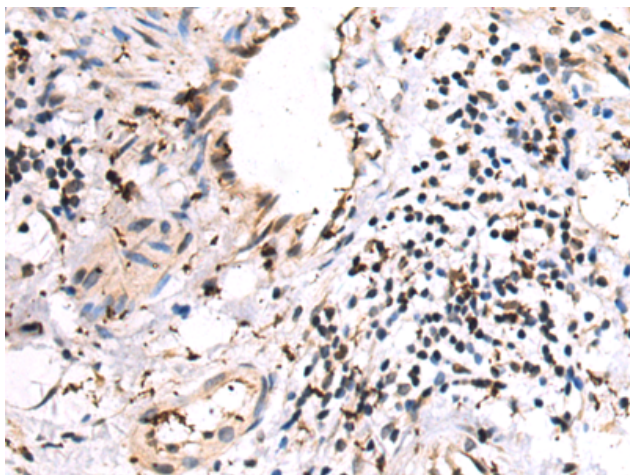
Purification: Antigen affinity purification

Species Reactivity: Human, Mouse, Rat

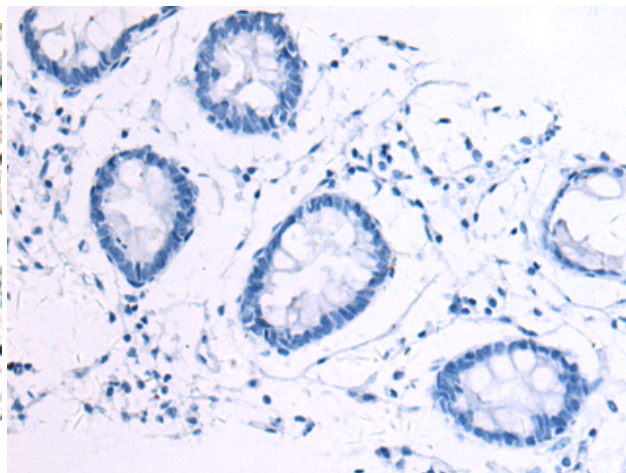
Constituents: PBS (without Mg²⁺ and Ca²⁺), pH 7.4, 150 mM NaCl, 0.05% Sodium Azide and 40% glycerol

Research Areas: Signal Transduction

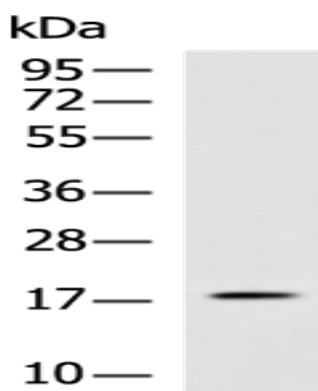
Storage & Shipping: Store at -20°C. Avoid repeated freezing and thawing



Immunohistochemistry analysis of paraffin embedded Human colorectal cancer tissue using 216563(HSPB2 Antibody) at a dilution of 1/110(Nucleus).



In comparison with the IHC on the left, the same paraffin-embedded Human colorectal cancer tissue is first treated with the fusion protein and then with 216563(Anti-HSPB2 Antibody) at dilution 1/110.



Gel: 8%SDS-PAGE, Lysate: 40 μ g;
Lane: Human heart tissue lysate;
Primary antibody: 216563(HSPB2 Antibody) at dilution 1/800;
Secondary antibody: HRP-conjugated Goat anti rabbit IgG at 1/5000 dilution;
Exposure time: 1 minute