

## HSPA1L RABBIT PAB

**Cat.#:** S213303

**Product Name:** Anti-HSPA1L Rabbit Polyclonal Antibody

**Synonyms:** HSP70T; hum70t; HSP70-1L; HSP70-HOM

**UNIPROT ID:** P34931

**Background:** This gene encodes a 70kDa heat shock protein. In conjunction with other heat shock proteins, this protein stabilizes existing proteins against aggregation and mediates the folding of newly translated proteins in the cytosol and in organelles. The gene is located in the major histocompatibility complex class III region, in a cluster with two closely related genes which also encode isoforms of the 70kDa heat shock protein.

**Immunogen:** Fusion protein of human HSPA1L

**Applications:** ELISA, WB, IHC

**Recommended Dilutions:** IHC: 50-200;WB: 1000-5000;ELISA: 5000-10000

**Host Species:** Rabbit

**Clonality:** Rabbit Polyclonal

**Isotype:** Immunogen-specific rabbit IgG

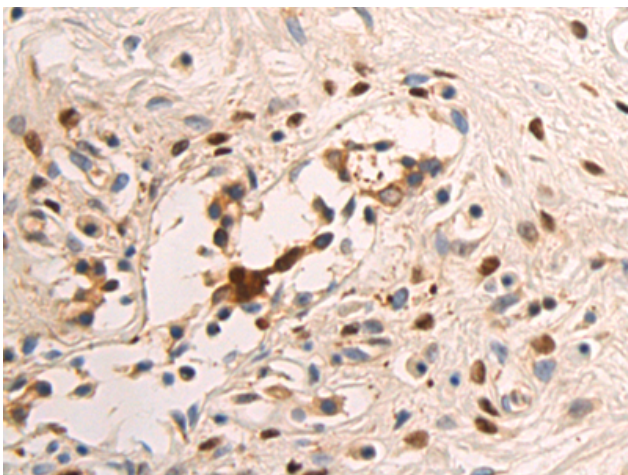
**Purification:** Antigen affinity purification

**Species Reactivity:** Human, Mouse, Rat

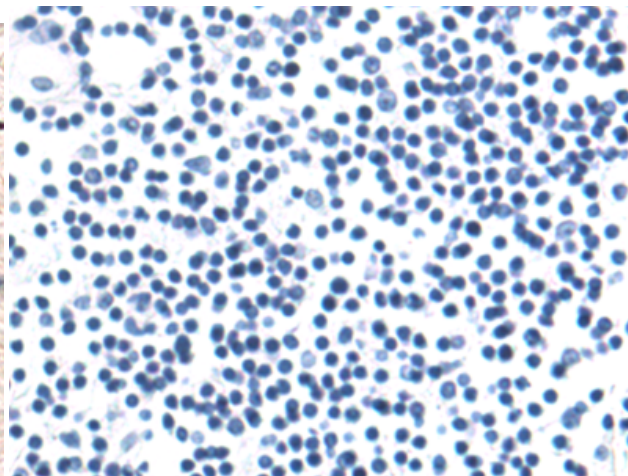
**Constituents:** PBS (without Mg<sup>2+</sup> and Ca<sup>2+</sup>), pH 7.4, 150 mM NaCl, 0.05% Sodium Azide and 40% glycerol

**Research Areas:** Signal Transduction

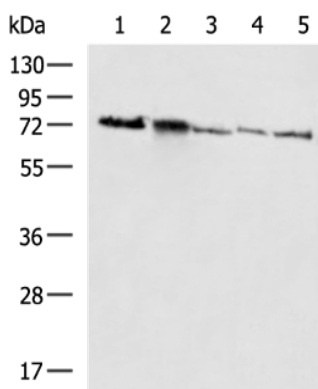
**Storage & Shipping:** Store at -20°C. Avoid repeated freezing and thawing



Immunohistochemistry analysis of paraffin embedded Human breast cancer tissue using 213303(HSPA1L Antibody) at a dilution of 1/70(Cytoplasm and Nucleus).



In comparison with the IHC on the left, the same paraffin-embedded Human breast cancer tissue is first treated with the fusion protein and then with 213303(Anti-HSPA1L Antibody) at dilution 1/70.



Gel: 8%SDS-PAGE, Lysate: 40  $\mu$ g;  
 Lane 1-5: HeLa cell, Mouse testis tissue, HepG2 cell, NIH/3T3 cell, MCF7 cell lysates;  
 Primary antibody: 213303(HSPA1L Antibody) at dilution 1/1000;  
 Secondary antibody: HRP-conjugated Goat anti rabbit IgG at 1/5000 dilution;  
 Exposure time: 5 seconds