

## HSDL2 RABBIT PAB

**Cat.#:** S219340

**Product Name:** Anti-HSDL2 Rabbit Polyclonal Antibody

**Synonyms:** C9orf99; SDR13C1

**UNIPROT ID:** Q6YN16 (Gene Accession - BC004331 )

**Background:** Has apparently no steroid dehydrogenase activity.

**Immunogen:** Fusion protein of human HSDL2

**Applications:** ELISA, WB, IHC

**Recommended Dilutions:** IHC: 50-100;WB: 1000-5000;ELISA: 5000-10000

**Host Species:** Rabbit

**Clonality:** Rabbit Polyclonal

**Isotype:** Immunogen-specific rabbit IgG

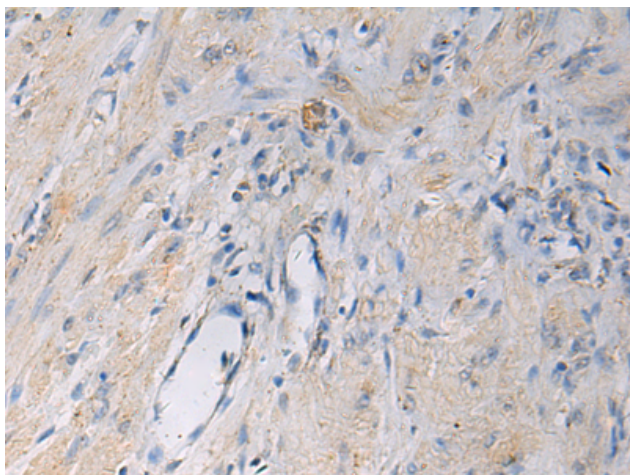
**Purification:** Antigen affinity purification

**Species Reactivity:** Human

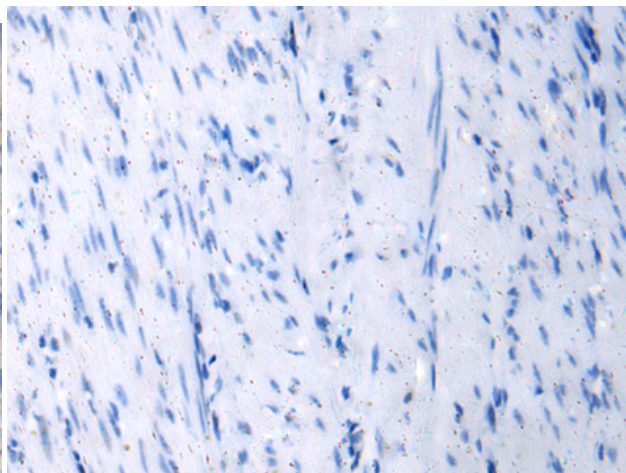
**Constituents:** PBS (without Mg<sup>2+</sup> and Ca<sup>2+</sup>), pH 7.4, 150 mM NaCl, 0.05% Sodium Azide and 40% glycerol

**Research Areas:** Metabolism

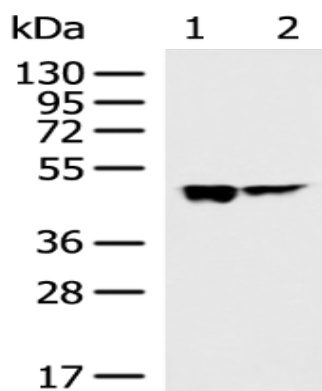
**Storage & Shipping:** Store at -20°C. Avoid repeated freezing and thawing



Immunohistochemistry analysis of paraffin embedded Human gastric cancer tissue using 219340(HSDL2 Antibody) at a dilution of 1/55(Cytoplasm).



In comparison with the IHC on the left, the same paraffin-embedded Human gastric cancer tissue is first treated with the fusion protein and then with 219340(Anti-HSDL2 Antibody) at dilution 1/55.



Gel: 8%SDS-PAGE, Lysate: 40 µg;  
 Lane 1-2: 293T and Hela cell lysates;  
 Primary antibody: 219340(HSDL2 Antibody) at dilution 1/1000;  
 Secondary antibody: HRP-conjugated Goat anti rabbit IgG at 1/5000 dilution;  
 Exposure time: 1 minute