

## HSD17B2 RABBIT PAB

**Cat.#:** S217515

**Product Name:** Anti-HSD17B2 Rabbit Polyclonal Antibody

**Synonyms:** HSD17; SDR9C2; EDH17B2

**UNIPROT ID:** P37059 (Gene Accession - BC009581 )

**Background:** Estradiol 17-beta-dehydrogenase 2 is an enzyme that in humans is encoded by the HSD17B2 gene. Capable of catalyzing the interconversion of testosterone and androstenedione, as well as estradiol and estrone. Also has 20-alpha-HSD activity. Uses NADH while EDH17B3 uses NADPH.

**Immunogen:** Fusion protein of human HSD17B2

**Applications:** ELISA, IHC

**Recommended Dilutions:** IHC: 50-200; ELISA: 2000-5000

**Host Species:** Rabbit

**Clonality:** Rabbit Polyclonal

**Isotype:** Immunogen-specific rabbit IgG

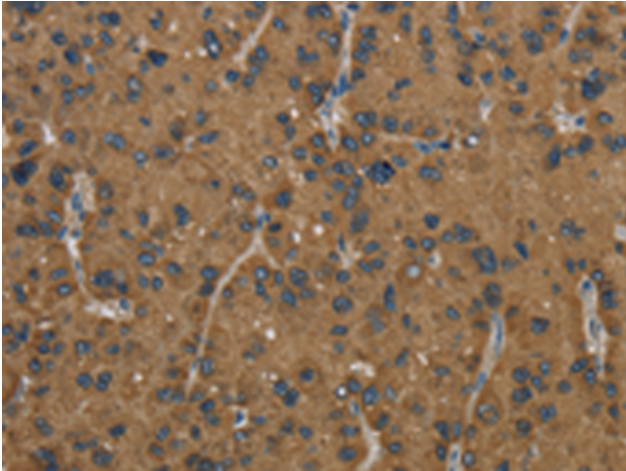
**Purification:** Antigen affinity purification

**Species Reactivity:** Human

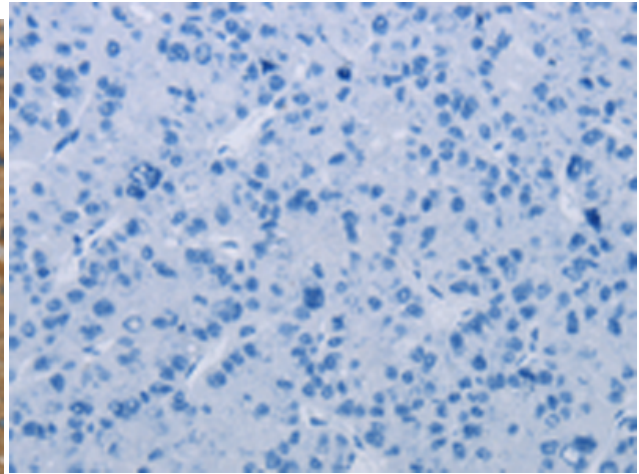
**Constituents:** PBS (without Mg<sup>2+</sup> and Ca<sup>2+</sup>), pH 7.4, 150 mM NaCl, 0.05% Sodium Azide and 40% glycerol

**Research Areas:** Signal Transduction, Cancer

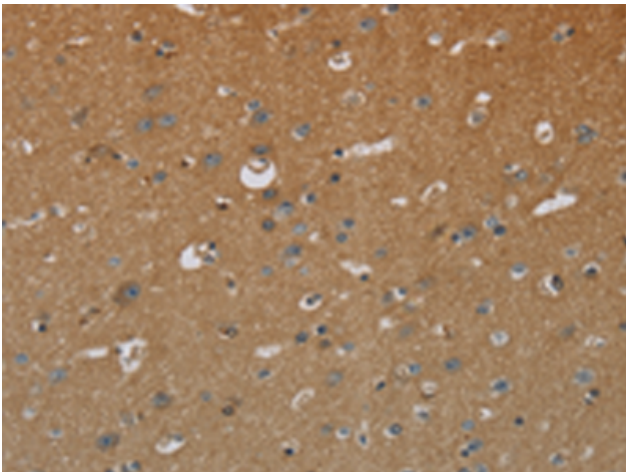
**Storage & Shipping:** Store at -20°C. Avoid repeated freezing and thawing



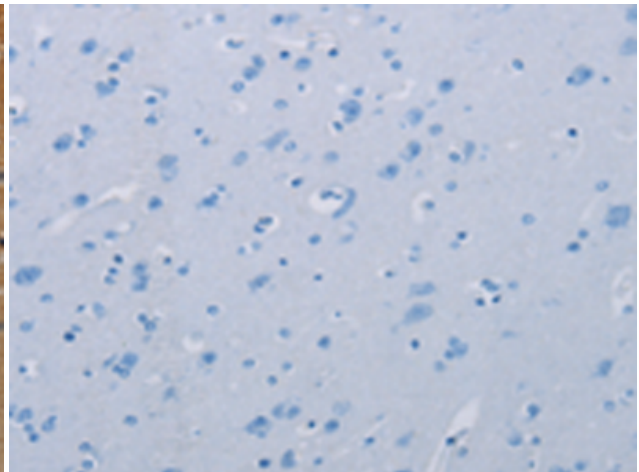
Immunohistochemistry analysis of paraffin embedded Human liver cancer tissue using 217515(HSD17B2 Antibody) at a dilution of 1/50(Cytoplasm).



In comparison with the IHC on the left, the same paraffin-embedded Human liver cancer tissue is first treated with the fusion protein and then with 217515(Anti-HSD17B2 Antibody) at dilution 1/50.



The image on the left is immunohistochemistry of paraffin-embedded Human brain tissue using 217515(Anti-HSD17B2 Antibody) at a dilution of 1/50.



In comparison with the IHC on the left, the same paraffin-embedded Human brain tissue is first treated with fusion protein and then with D222504(Anti-HSD17B2 Antibody) at dilution 1/50.