

HS1BP3 RABBIT PAB

Cat.#: S219015

Product Name: Anti-HS1BP3 Rabbit Polyclonal Antibody

Synonyms: ETM2; HSI-BP3

UNIPROT ID: Q53T59 (Gene Accession - BC050636)

Background: The protein encoded by this gene shares similarity with mouse Hs1bp3, an Hcls1/Hs1-interacting protein that may be involved in lymphocyte activation.

Immunogen: Fusion protein of human HS1BP3

Applications: ELISA, WB, IHC

Recommended Dilutions: IHC: 150-300;WB: 500-2000;ELISA: 5000-10000

Host Species: Rabbit

Clonality: Rabbit Polyclonal

Isotype: Immunogen-specific rabbit IgG

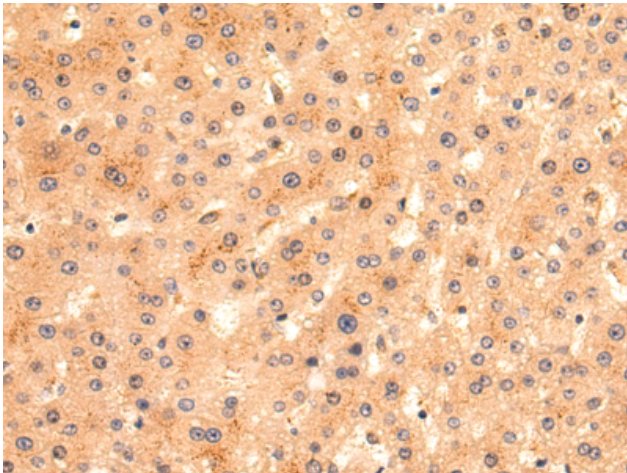
Purification: Antigen affinity purification

Species Reactivity: Human, Mouse

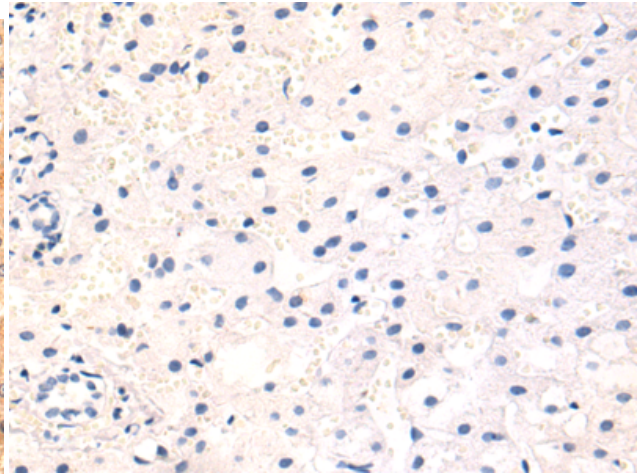
Constituents: PBS (without Mg²⁺ and Ca²⁺), pH 7.4, 150 mM NaCl, 0.05% Sodium Azide and 40% glycerol

Research Areas: Signal Transduction, Neuroscience

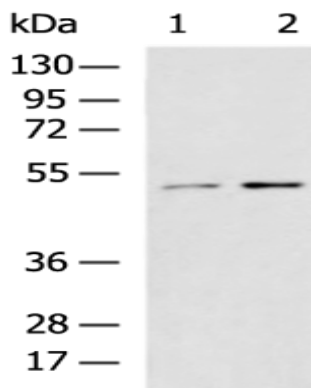
Storage & Shipping: Store at -20°C. Avoid repeated freezing and thawing



Immunohistochemistry analysis of paraffin embedded Human liver cancer tissue using 219015(HS1BP3 Antibody) at a dilution of 1/140(Cytoplasm).



In comparison with the IHC on the left, the same paraffin-embedded Human liver cancer tissue is first treated with the fusion protein and then with 219015(Anti-HS1BP3 Antibody) at dilution 1/140.



Gel: 8%SDS-PAGE, Lysate: 40 μ g;
Lane 1-2: A549 and NIH/3T3 cell lysates;
Primary antibody: 219015(HS1BP3 Antibody) at dilution 1/1000;
Secondary antibody: HRP-conjugated Goat anti rabbit IgG at 1/5000 dilution;
Exposure time: 1 minute