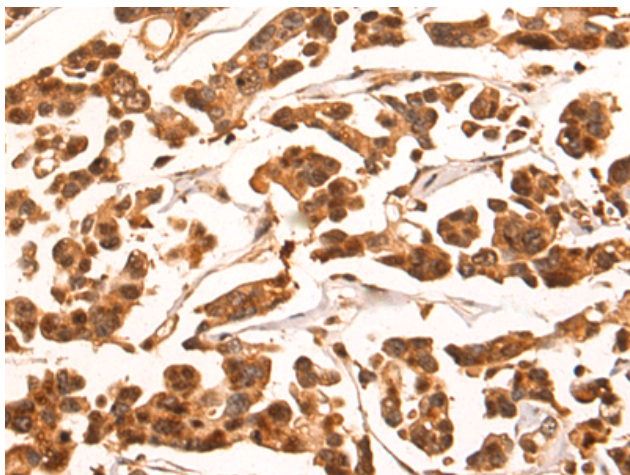


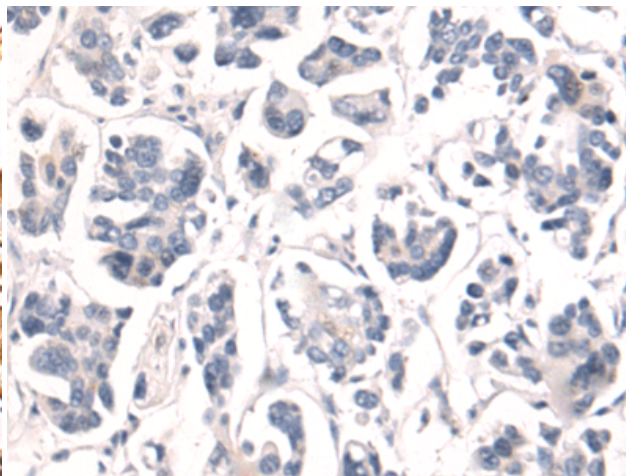
**HRAS RABBIT PAB****Cat.#:** S222352**Product Name:** Anti-HRAS Rabbit Polyclonal Antibody**Synonyms:** CTLO; HAMS; HRAS1; RASH1; p21ras; C-H-RAS; H-RAS1; C-BAS/HAS; C-HA-RAS1**UNIPROT ID:** P01112 (Gene Accession - NP\_005334 )

**Background:** This gene belongs to the Ras oncogene family, whose members are related to the transforming genes of mammalian sarcoma retroviruses. The products encoded by these genes function in signal transduction pathways. These proteins can bind GTP and GDP, and they have intrinsic GTPase activity. This protein undergoes a continuous cycle of de- and re-palmitoylation, which regulates its rapid exchange between the plasma membrane and the Golgi apparatus. Mutations in this gene cause Costello syndrome, a disease characterized by increased growth at the prenatal stage, growth deficiency at the postnatal stage, predisposition to tumor formation, cognitive disability, skin and musculoskeletal abnormalities, distinctive facial appearance and cardiovascular abnormalities. Defects in this gene are implicated in a variety of cancers, including bladder cancer, follicular thyroid cancer, and oral squamous cell carcinoma. Multiple transcript variants, which encode different isoforms, have been identified for this gene.

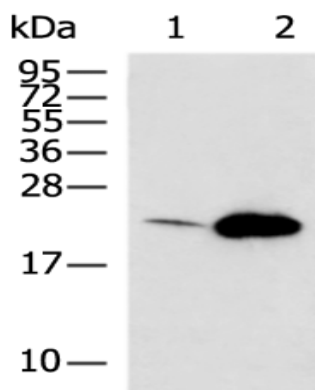
**Immunogen:** Synthetic peptide of human HRAS**Applications:** ELISA, WB, IHC**Recommended Dilutions:** IHC: 100-300;WB: 500-2000;ELISA: 5000-10000**Host Species:** Rabbit**Clonality:** Rabbit Polyclonal**Isotype:** Immunogen-specific rabbit IgG**Purification:** Antigen affinity purification**Species Reactivity:** Human, Mouse, Rat**Constituents:** PBS (without Mg<sup>2+</sup> and Ca<sup>2+</sup>), pH 7.4, 150 mM NaCl, 0.05% Sodium Azide and 40% glycerol**Research Areas:** Signal Transduction, Epigenetics and Nuclear Signaling, Cancer**Storage & Shipping:** Store at -20°C. Avoid repeated freezing and thawing



Immunohistochemistry analysis of paraffin embedded Human colorectal cancer tissue using 222352(HRAS Antibody) at a dilution of 1/50(Nucleus).



In comparison with the IHC on the left, the same paraffin-embedded Human colorectal cancer tissue is first treated with the synthetic peptide and then with 222352(Anti-HRAS Antibody) at dilution 1/50.



Gel: 10%SDS-PAGE, Lysate: 40 µg;  
 Lane 1-2: A549 cell, Mouse brain tissue lysates  
 ;  
 Primary antibody: 222352(HRAS Antibody) at dilution 1/400;  
 Secondary antibody: HRP-conjugated Goat anti rabbit IgG at 1/5000 dilution;  
 Exposure time: 90 seconds