

HPDL RABBIT MAB

Cat.#: N262360

Product Name: Anti-HPDL Rabbit Monoclonal Antibody

Synonyms: 4-hydroxyphenylpyruvate dioxygenase like; GLOXD1; 4-HPPD-L

UNIPROT ID: Q96IR7

Background: May have dioxygenase activity.

Immunogen: A synthetic peptide of human HPDL

Applications: WB,IP

Recommended Dilutions: WB: 1/500-1/1000 IP: 1/20

Host Species: Rabbit

Clonality: Rabbit Monoclonal

Clone ID: R08-5K5

MW: Calculated MW: 39 kDa; Observed MW: 39 kDa

Isotype: IgG

Purification: Affinity Purified

Species Reactivity: Human

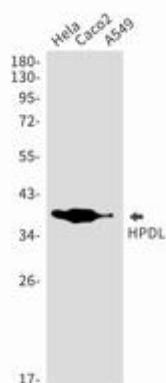
Conjugation: Unconjugated

Modification: Unmodified

Constituents: PBS (without Mg²⁺ and Ca²⁺), pH 7.3 containing 50% glycerol, 0.5% BSA and 0.02% sodium azide

Research Areas: Signal Transduction

Storage & Shipping: Store at -20°C. Avoid repeated freezing and thawing



Western blot analysis of HPDL in Hela, Caco2, A549 lysates using HPDL antibody.