

HPD RABBIT PAB

Cat.#: S213306

Product Name: Anti-HPD Rabbit Polyclonal Antibody

Synonyms: PPD; 4HPPD; GLOD3; 4-HPPD; HPPDASE

UNIPROT ID: P32754

Background: The protein encoded by this gene is an enzyme in the catabolic pathway of tyrosine. The encoded protein catalyzes the conversion of 4-hydroxyphenylpyruvate to homogentisate. Defects in this gene are a cause of tyrosinemia type 3 (TYRO3) and hawkinsinuria (HAWK). Two transcript variants encoding different isoforms have been found for this gene.

Immunogen: Fusion protein of human HPD

Applications: ELISA, WB, IHC

Recommended Dilutions: IHC: 50-200;WB: 1000-5000;ELISA: 5000-10000

Host Species: Rabbit

Clonality: Rabbit Polyclonal

Isotype: Immunogen-specific rabbit IgG

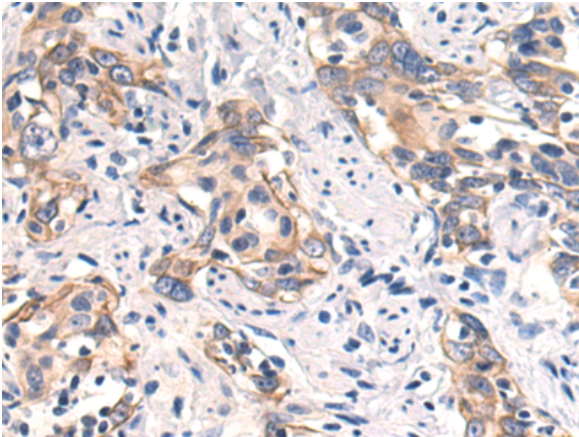
Purification: Antigen affinity purification

Species Reactivity: Human, Mouse, Rat

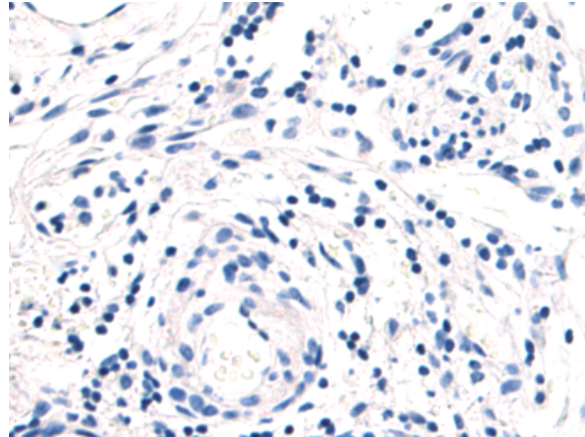
Constituents: PBS (without Mg²⁺ and Ca²⁺), pH 7.4, 150 mM NaCl, 0.05% Sodium Azide and 40% glycerol

Research Areas: Metabolism, Cell Biology

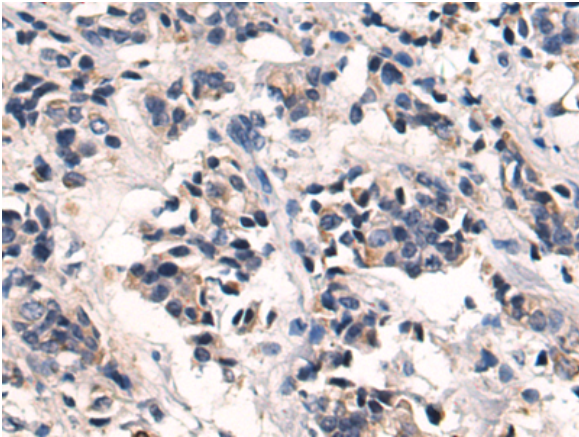
Storage & Shipping: Store at -20°C. Avoid repeated freezing and thawing



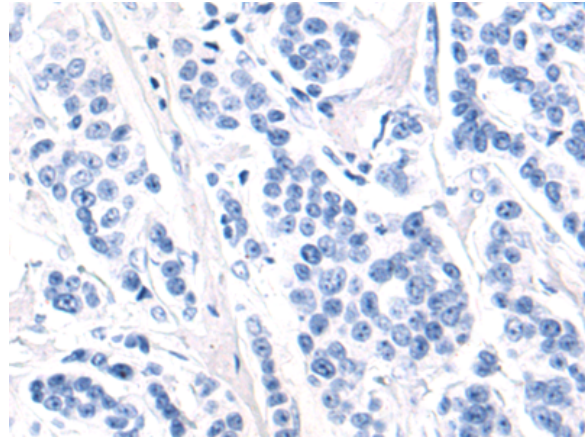
Immunohistochemistry analysis of paraffin embedded Human cervical cancer tissue using 213306(HPD Antibody) at a dilution of 1/75(Cytoplasm).



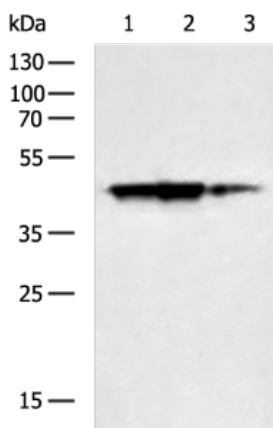
In comparison with the IHC on the left, the same paraffin-embedded Human cervical cancer tissue is first treated with the fusion protein and then with 213306(Anti-HPD Antibody) at dilution 1/75.



The image on the left is immunohistochemistry of paraffin-embedded Human breast cancer tissue using 213306(Anti-HPD Antibody) at a dilution of 1/75.



In comparison with the IHC on the left, the same paraffin-embedded Human breast cancer tissue is first treated with fusion protein and then with D154263(Anti-HPD Antibody) at dilution 1/75.



Gel: 8%SDS-PAGE, Lysate:40 µg;
 Lane 1-3: Rat kidney tissue, Mouse liver tissue,
 Mouse fetal liver tissue lysates;
 Primary antibody: 213306(HPD Antibody) at dilution
 1/5000;
 Secondary antibody: HRP-conjugated Goat anti
 rabbit IgG at 1/5000 dilution;
 Exposure time: 10 seconds



Product Description

Pioneering GTPase and Oncogene Product Development since 2010
