

HPCAL1 RABBIT PAB

Cat.#: S219242

Product Name: Anti-HPCAL1 Rabbit Polyclonal Antibody

Synonyms: BDRI; HLP2; VILIP-3

UNIPROT ID: P37235 (Gene Accession - BC009846)

Background: The protein encoded by this gene is a member of neuron-specific calcium-binding proteins family found in the retina and brain. It is highly similar to human hippocalcin protein and nearly identical to the rat and mouse hippocalcin like-1 proteins. It may be involved in the calcium-dependent regulation of rhodopsin phosphorylation and may be of relevance for neuronal signalling in the central nervous system. Several alternatively spliced transcript variants encoding the same protein have been found for this gene.

Immunogen: Fusion protein of human HPCAL1

Applications: ELISA, WB, IHC

Recommended Dilutions: IHC: 50-200;WB: 1000-5000;ELISA: 5000-10000

Host Species: Rabbit

Clonality: Rabbit Polyclonal

Isotype: Immunogen-specific rabbit IgG

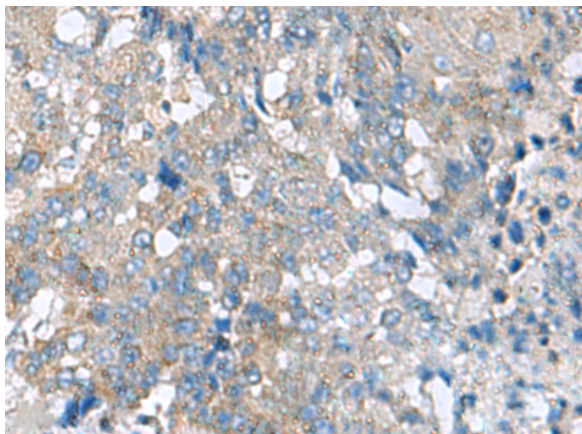
Purification: Antigen affinity purification

Species Reactivity: Human, Mouse, Rat

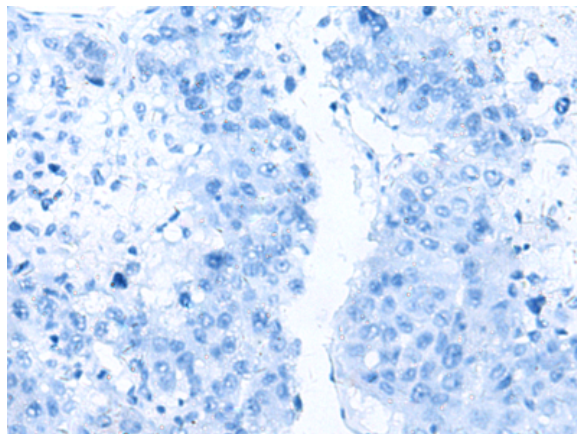
Constituents: PBS (without Mg²⁺ and Ca²⁺), pH 7.4, 150 mM NaCl, 0.05% Sodium Azide and 40% glycerol

Research Areas: Neuroscience

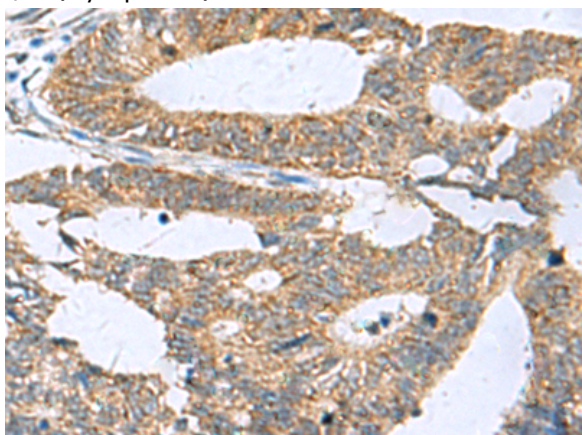
Storage & Shipping: Store at -20°C. Avoid repeated freezing and thawing



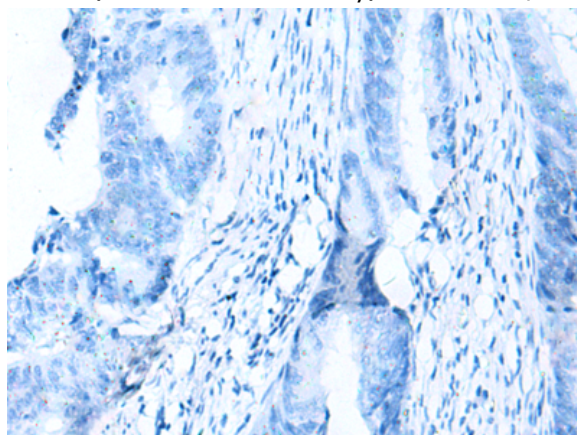
Immunohistochemistry analysis of paraffin embedded Human liver cancer tissue using 219242(HPCAL1 Antibody) at a dilution of 1/70(Cytoplasm).



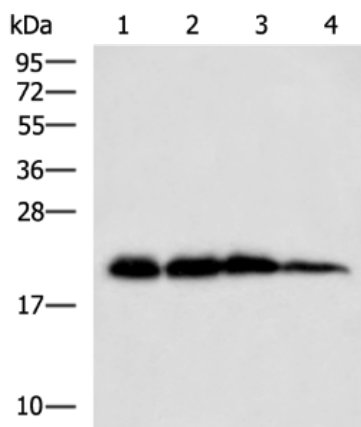
In comparison with the IHC on the left, the same paraffin-embedded Human liver cancer tissue is first treated with the fusion protein and then with 219242(Anti-HPCAL1 Antibody) at dilution 1/70.



The image on the left is immunohistochemistry of paraffin-embedded Human colorectal cancer tissue using 219242(Anti-HPCAL1 Antibody) at a dilution of 1/70.



In comparison with the IHC on the left, the same paraffin-embedded Human colorectal cancer tissue is first treated with fusion protein and then with D226117(Anti-HPCAL1 Antibody) at dilution 1/70.



Gel: 12%SDS-PAGE, Lysate: 40 µg;
 Lane 1-4: Rat brain tissue, Hela, HepG2 and A172 cell lysates;
 Primary antibody: 219242(HPCAL1 Antibody) at dilution 1/1000;
 Secondary antibody: HRP-conjugated Goat anti rabbit IgG at 1/5000 dilution;
 Exposure time: 5 seconds



Product Description

Pioneering GTPase and Oncogene Product Development since 2010
