

HPCA RABBIT PAB

Cat.#: S222179

Product Name: Anti-HPCA Rabbit Polyclonal Antibody

Synonyms: BDR2; DYT2

UNIPROT ID: P84074 (Gene Accession - NP_002134)

Background: The protein encoded by this gene is a member of neuron-specific calcium-binding proteins family found in the retina and brain. This protein is associated with the plasma membrane. It has similarities to proteins located in the photoreceptor cells that regulate photosignal transduction in a calcium-sensitive manner. This protein displays recoverin activity and a calcium-dependent inhibition of rhodopsin kinase. It is identical to the rat and mouse hippocalcin proteins and thought to play an important role in neurons of the central nervous system in a number of species.

Immunogen: Synthetic peptide of human HPCA

Applications: ELISA, IHC

Recommended Dilutions: IHC: 50-300; ELISA: 5000-10000

Host Species: Rabbit

Clonality: Rabbit Polyclonal

Isotype: Immunogen-specific rabbit IgG

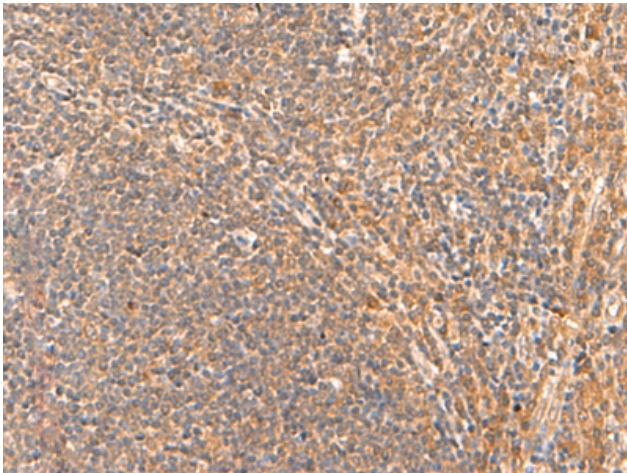
Purification: Antigen affinity purification

Species Reactivity: Human, Mouse, Rat

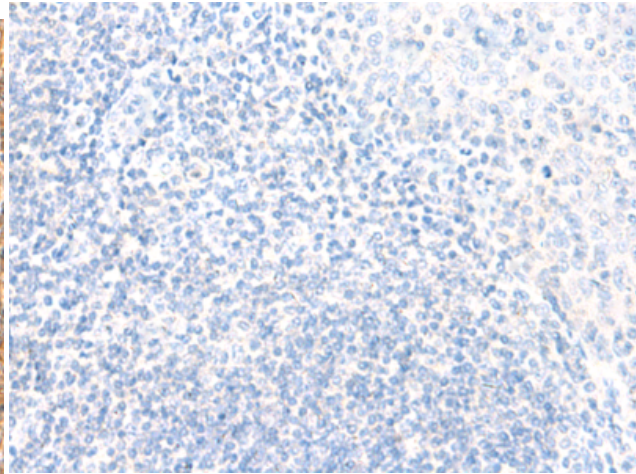
Constituents: PBS (without Mg²⁺ and Ca²⁺), pH 7.4, 150 mM NaCl, 0.05% Sodium Azide and 40% glycerol

Research Areas: Neuroscience

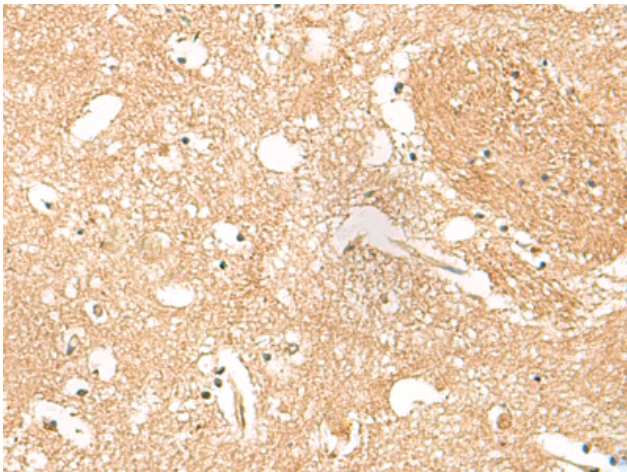
Storage & Shipping: Store at -20°C. Avoid repeated freezing and thawing



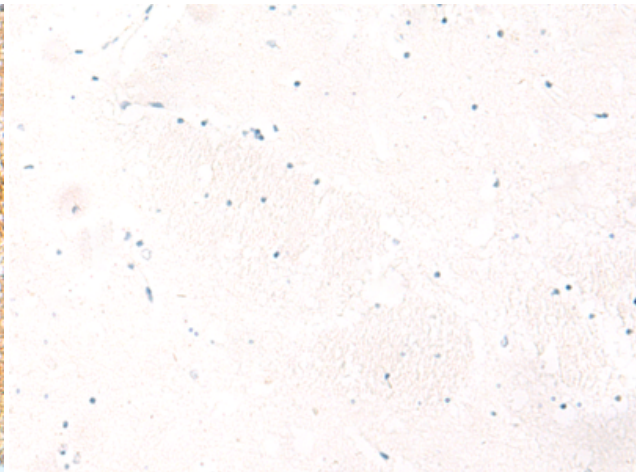
Immunohistochemistry analysis of paraffin embedded Human tonsil tissue using 222179 (HPCA Antibody) at a dilution of 1/55 (Cytoplasm).



In comparison with the IHC on the left, the same paraffin-embedded Human tonsil tissue is first treated with the synthetic peptide and then with 222179 (Anti-HPCA Antibody) at dilution 1/55.



The image on the left is immunohistochemistry of paraffin-embedded Human brain tissue using 222179 (Anti-HPCA Antibody) at a dilution of 1/55.



In comparison with the IHC on the left, the same paraffin-embedded Human brain tissue is first treated with synthetic peptide and then with D264180 (Anti-HPCA Antibody) at dilution 1/55.