

## HP1 GAMMA (6D7) MOUSE MAB

**Cat.#:** N261347

**Product Name:** Anti-HP1 gamma (6D7) Mouse Monoclonal Antibody

**Synonyms:** CBX3; Chromobox protein homolog 3; HECH; Heterochromatin protein 1 homolog gamma; HP1 gamma; Modifier 2 protein

**UNIPROT ID:** Q13185

**Background:** Recognizes and binds histone H3 tails methylated at 'Lys-9', leading to epigenetic repression. May contribute to the association of the heterochromatin with the inner nuclear membrane through its interaction with lamin B receptor (LBR). Involved in the formation of functional kinetochore through interaction with MIS12 complex proteins.

**Immunogen:** Purified recombinant protein expressed in E.coli.

**Applications:** WB,IHC-P

**Recommended Dilutions:** WB: 1/500-1/1000 IHC: 1/50-1/100

**Host Species:** Mouse

**Clonality:** Mouse Monoclonal

**Clone ID:** 6F7-6A3-2B10

**MW:** Calculated MW: 21 kDa; Observed MW: 24 kDa

**Isotype:** IgG1

**Purification:** Affinity Purified

**Species Reactivity:** Human,Rat,Mouse

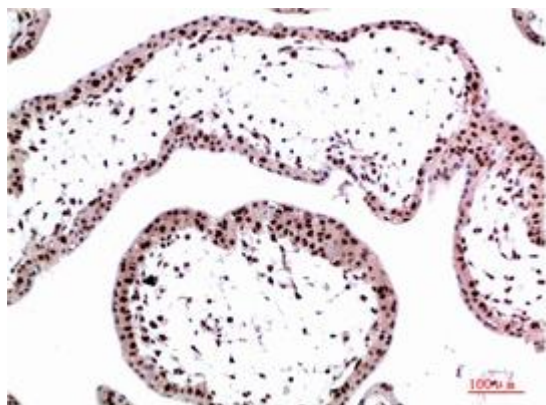
**Conjugation:** Unconjugated

**Modification:** Unmodified

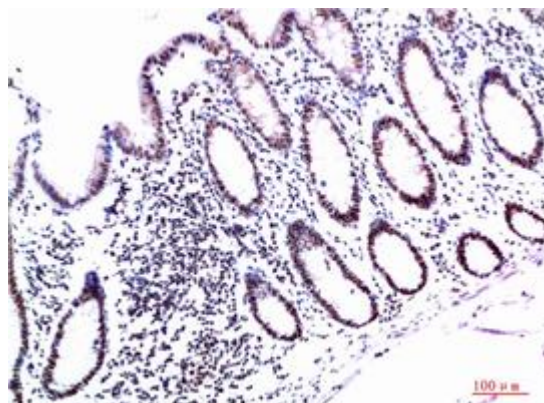
**Constituents:** PBS (without Mg<sup>2+</sup> and Ca<sup>2+</sup>), pH 7.3 containing 50% glycerol, 0.5% BSA and 0.02% sodium azide

**Research Areas:** Epigenetics and Nuclear Signaling

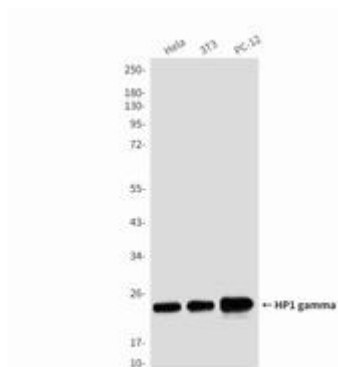
**Storage & Shipping:** Store at -20°C. Avoid repeated freezing and thawing



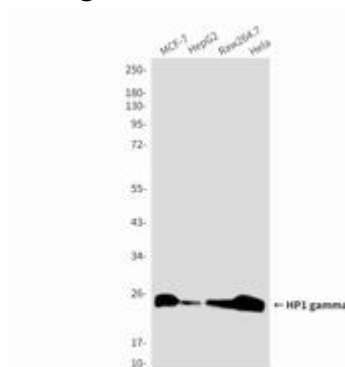
Immunohistochemical analysis of paraffin-embedded Human tonsils using HP1 gamma (6D7) antibody. High-pressure and temperature Sodium Citrate pH 6.0 was used for antigen retrieval.



Immunohistochemistry analysis of paraffin-embedded Human Colon Carcinoma Tissue using HP1 gamma (6D7) antibody. High-pressure and temperature Sodium Citrate pH 6.0 was used for antigen retrieval.



Western blot analysis of HP1 gamma (6D7) in Hela lysates, 3T3 lysates, PC-12 lysates using HP1 gamma (6D7) antibody



Western blot analysis of HP1 gamma (6D7) in MCF-7, HepG2, Raw264.7, Hela lysates using HP1 gamma (6D7) antibody.