

## HOXC8 RABBIT PAB

**Cat.#:** S219855

**Product Name:** Anti-HOXC8 Rabbit Polyclonal Antibody

**Synonyms:** HOX3; HOX3A

**UNIPROT ID:** P31273 (Gene Accession - NP\_073149 )

**Background:** This gene belongs to the homeobox family of genes. The homeobox genes encode a highly conserved family of transcription factors that play an important role in morphogenesis in all multicellular organisms. Mammals possess four similar homeobox gene clusters, HOXA, HOXB, HOXC and HOXD, which are located on different chromosomes and consist of 9 to 11 genes arranged in tandem. This gene is one of several homeobox HOXC genes located in a cluster on chromosome 12. The product of this gene may play a role in the regulation of cartilage differentiation. It could also be involved in chondrodysplasias or other cartilage disorders.

**Immunogen:** Synthetic peptide of human HOXC8

**Applications:** ELISA, WB, IHC

**Recommended Dilutions:** IHC: 50-200;WB: 200-1000;ELISA: 2000-5000

**Host Species:** Rabbit

**Clonality:** Rabbit Polyclonal

**Isotype:** Immunogen-specific rabbit IgG

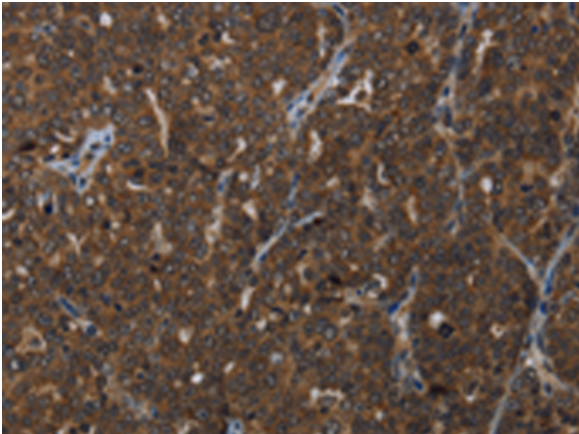
**Purification:** Antigen affinity purification

**Species Reactivity:** Human, Mouse

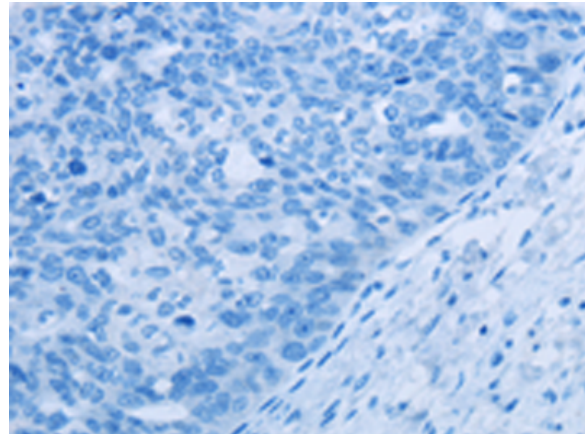
**Constituents:** PBS (without Mg<sup>2+</sup> and Ca<sup>2+</sup>), pH 7.4, 150 mM NaCl, 0.05% Sodium Azide and 40% glycerol

**Research Areas:** Epigenetics and Nuclear Signaling, Developmental Biology

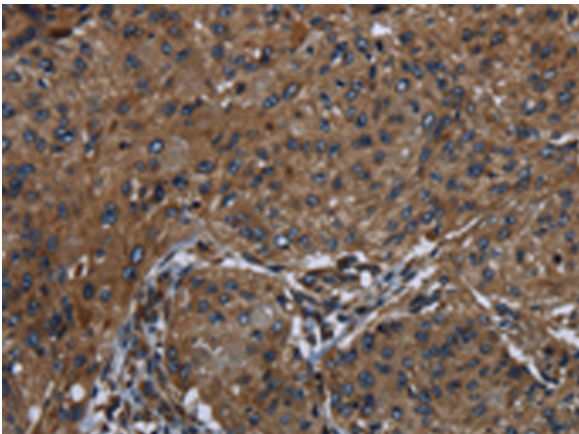
**Storage & Shipping:** Store at -20°C. Avoid repeated freezing and thawing



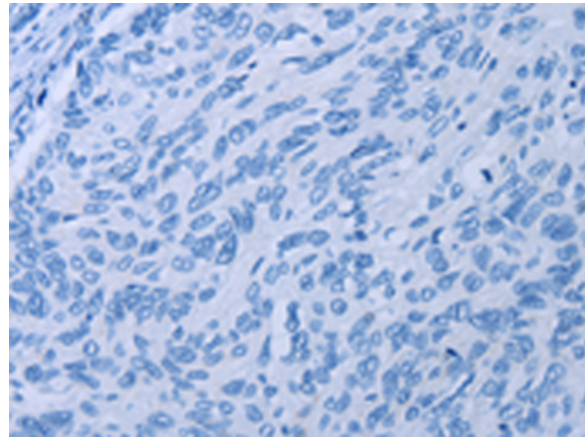
Immunohistochemistry analysis of paraffin embedded Human ovarian cancer tissue using 219855(HOXC8 Antibody) at a dilution of 1/25(Cytoplasm and Nucleus).



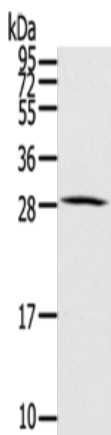
In comparison with the IHC on the left, the same paraffin-embedded Human ovarian cancer tissue is first treated with the synthetic peptide and then with 219855(Anti-HOXC8 Antibody) at dilution 1/25.



The image on the left is immunohistochemistry of paraffin-embedded Human esophagus cancer tissue using 219855(Anti-HOXC8 Antibody) at a dilution of 1/25.



In comparison with the IHC on the left, the same paraffin-embedded Human esophagus cancer tissue is first treated with synthetic peptide and then with D260492(Anti-HOXC8 Antibody) at dilution 1/25.



Gel: 12%SDS-PAGE, Lysate: 40 µg;  
Lane: Human thyroid cancer tissue;  
Primary antibody: 219855(HOXC8 Antibody) at dilution 1/200;  
Secondary antibody: Goat anti rabbit IgG at 1/8000 dilution;  
Exposure time: 10 seconds



# Product Description

Pioneering GTPase and Oncogene Product Development since 2010

---