

## HOXA9 RABBIT PAB

**Cat.#:** S221363

**Product Name:** Anti-HOXA9 Rabbit Polyclonal Antibody

**Synonyms:** HOX1; ABD-B; HOX1G; HOX1.7

**UNIPROT ID:** P31269 (Gene Accession - NP\_689952 )

**Background:** This gene is part of the A cluster on chromosome 7 and encodes a DNA-binding transcription factor which may regulate gene expression, morphogenesis, and differentiation. This gene is highly similar to the abdominal-B (Abd-B) gene of *Drosophila*. A specific translocation event which causes a fusion between this gene and the NUP98 gene has been associated with myeloid leukemogenesis. Read-through transcription exists between this gene and the upstream homeobox A10 (HOXA10) gene.

**Immunogen:** Synthetic peptide of human HOXA9

**Applications:** ELISA, WB, IHC

**Recommended Dilutions:** IHC: 25-100;WB: 200-1000;ELISA: 5000-10000

**Host Species:** Rabbit

**Clonality:** Rabbit Polyclonal

**Isotype:** Immunogen-specific rabbit IgG

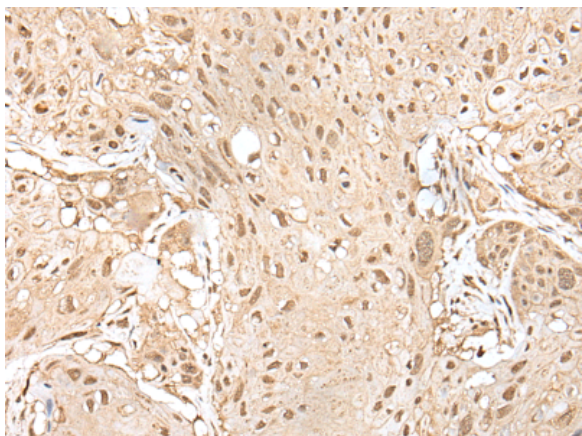
**Purification:** Antigen affinity purification

**Species Reactivity:** Human, Mouse

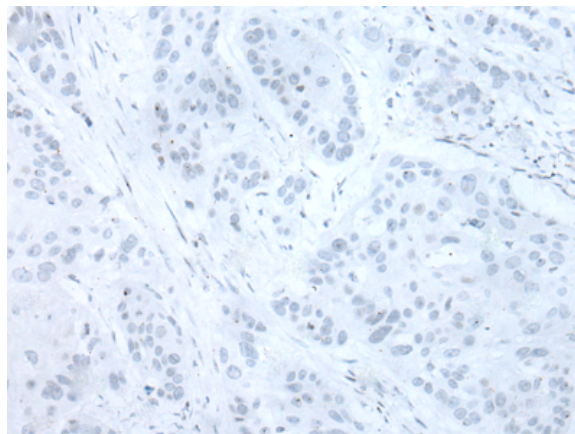
**Constituents:** PBS (without Mg<sup>2+</sup> and Ca<sup>2+</sup>), pH 7.4, 150 mM NaCl, 0.05% Sodium Azide and 40% glycerol

**Research Areas:** Stem Cells

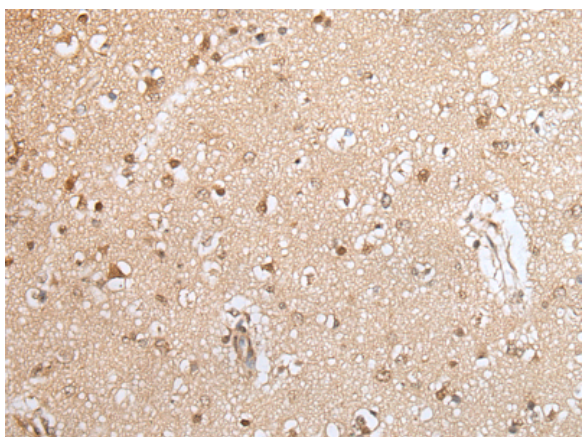
**Storage & Shipping:** Store at -20°C. Avoid repeated freezing and thawing



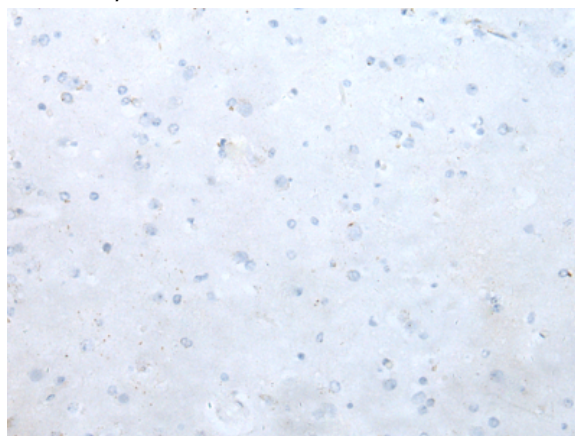
Immunohistochemistry analysis of paraffin embedded Human esophagus cancer tissue using 221363(HOXA9 Antibody) at a dilution of 1/30(Nucleus and Cytoplasm).



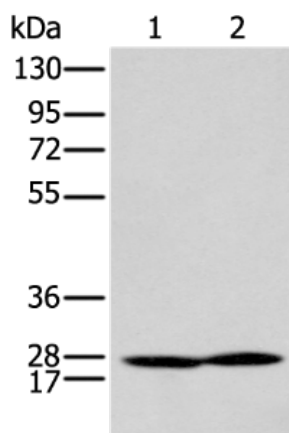
In comparison with the IHC on the left, the same paraffin-embedded Human esophagus cancer tissue is first treated with the synthetic peptide and then with 221363(Anti-HOXA9 Antibody) at dilution 1/30.



The image on the left is immunohistochemistry of paraffin-embedded Human brain tissue using 221363(Anti-HOXA9 Antibody) at a dilution of 1/30.



In comparison with the IHC on the left, the same paraffin-embedded Human brain tissue is first treated with synthetic peptide and then with D262920(Anti-HOXA9 Antibody) at dilution 1/30.



Gel: 8%SDS-PAGE, Lysate: 40 µg;  
 Lane 1-2: Mouse kidney tissue, Mouse spleen tissue;  
 Primary antibody: 221363(HOXA9 Antibody) at dilution 1/300;  
 Secondary antibody: Goat anti rabbit IgG at 1/8000 dilution;  
 Exposure time: 20 seconds



# Product Description

Pioneering GTPase and Oncogene Product Development since 2010

---