

## HOMER1 RABBIT PAB

**Cat.#:** S217508

**Product Name:** Anti-HOMER1 Rabbit Polyclonal Antibody

**Synonyms:** HOMER; SYN47; Ves-1; HOMER1A; HOMER1B; HOMER1C

**UNIPROT ID:** Q86YM7 (Gene Accession - BC015502 )

**Background:** This gene encodes a member of the homer family of dendritic proteins. Members of this family regulate group 1 metabotropic glutamate receptor function.

**Immunogen:** Fusion protein of human HOMER1

**Applications:** ELISA, WB, IHC

**Recommended Dilutions:** IHC: 25-100;WB: 500-2000;ELISA: 2000-5000

**Host Species:** Rabbit

**Clonality:** Rabbit Polyclonal

**Isotype:** Immunogen-specific rabbit IgG

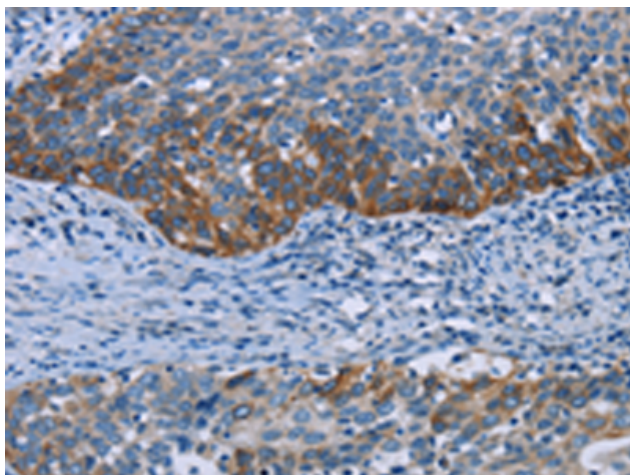
**Purification:** Antigen affinity purification

**Species Reactivity:** Human, Mouse, Rat

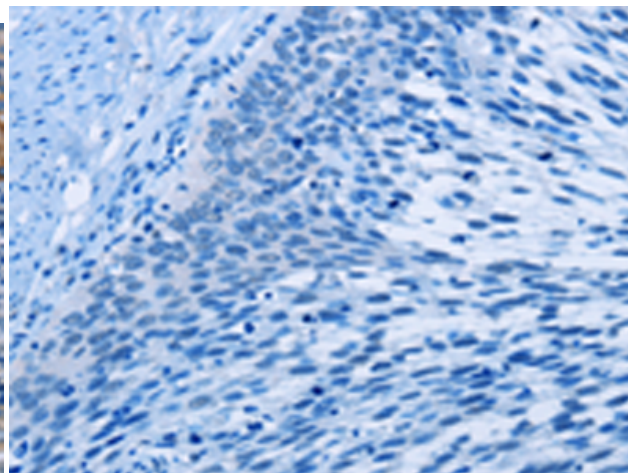
**Constituents:** PBS (without Mg<sup>2+</sup> and Ca<sup>2+</sup>), pH 7.4, 150 mM NaCl, 0.05% Sodium Azide and 40% glycerol

**Research Areas:** Neuroscience

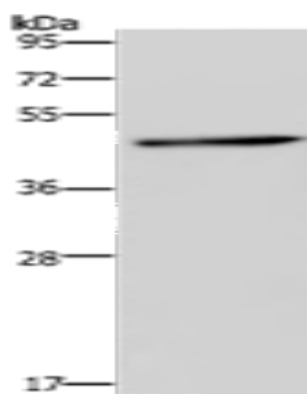
**Storage & Shipping:** Store at -20°C. Avoid repeated freezing and thawing



Immunohistochemistry analysis of paraffin embedded Human cervical cancer tissue using 217508(HOMER1 Antibody) at a dilution of 1/50(Cytoplasm).



In comparison with the IHC on the left, the same paraffin-embedded Human cervical cancer tissue is first treated with the fusion protein and then with 217508(Anti-HOMER1 Antibody) at dilution 1/50.



Gel: 10%SDS-PAGE, Lysate: 40  $\mu$ g;  
Lane: Mouse brain tissue;  
Primary antibody: 217508(HOMER1 Antibody) at dilution 1/300;  
Secondary antibody: Goat anti rabbit IgG at 1/8000 dilution;  
Exposure time: 10 seconds