

## HNRNPUL1 RABBIT PAB

**Cat.#:** S222194

**Product Name:** Anti-HNRNPUL1 Rabbit Polyclonal Antibody

**Synonyms:** EIBAP5; EIB-AP5; HNRNPUL1

**UNIPROT ID:** Q9BUJ2 (Gene Accession - NP\_008971)

**Background:** This gene encodes a nuclear RNA-binding protein of the heterogeneous nuclear ribonucleoprotein (hnRNP) family. This protein binds specifically to adenovirus early-1B-55kDa oncoprotein. It may play an important role in nucleocytoplasmic RNA transport, and its function is modulated by early-1B-55kDa in adenovirus-infected cells.

**Immunogen:** Synthetic peptide of human HNRNPUL1

**Applications:** ELISA, WB, IHC

**Recommended Dilutions:** IHC: 30-150;WB: 200-1000;ELISA: 5000-10000

**Host Species:** Rabbit

**Clonality:** Rabbit Polyclonal

**Isotype:** Immunogen-specific rabbit IgG

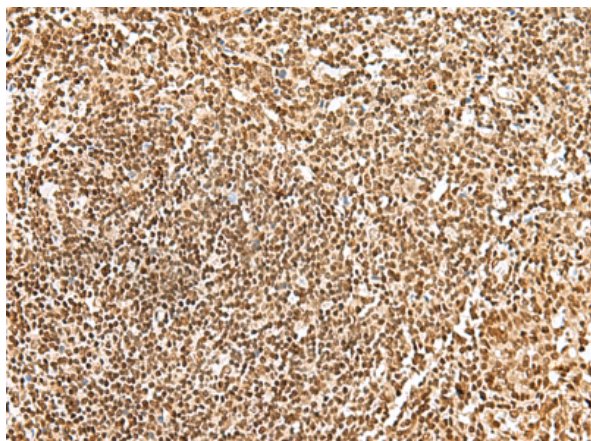
**Purification:** Antigen affinity purification

**Species Reactivity:** Human, Mouse

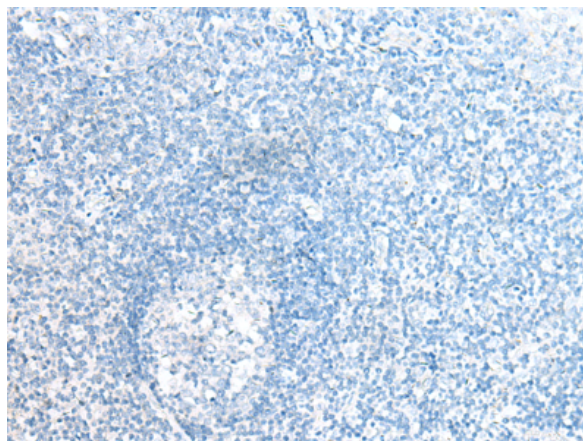
**Constituents:** PBS (without Mg<sup>2+</sup> and Ca<sup>2+</sup>), pH 7.4, 150 mM NaCl, 0.05% Sodium Azide and 40% glycerol

**Research Areas:** Epigenetics and Nuclear Signaling

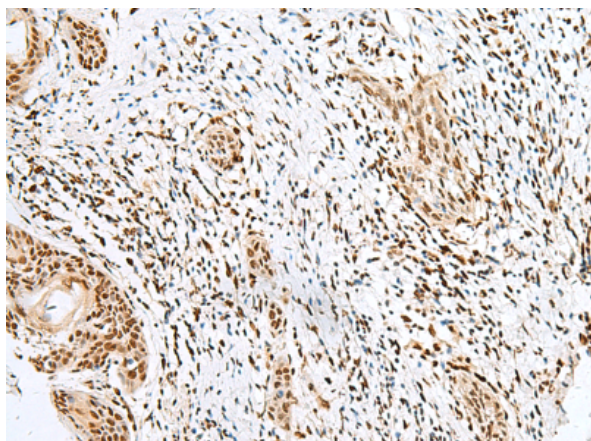
**Storage & Shipping:** Store at -20°C. Avoid repeated freezing and thawing



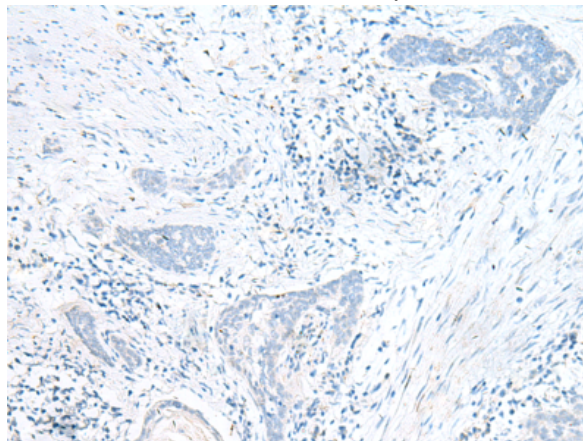
Immunohistochemistry analysis of paraffin embedded Human tonsil tissue using 222194(HNRNPUL1 Antibody) at a dilution of 1/20(Nucleus).



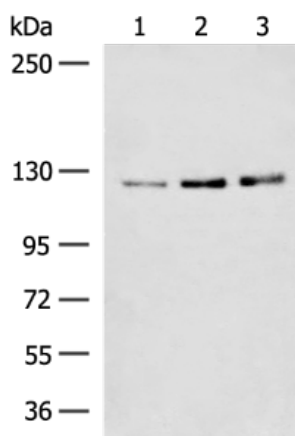
In comparison with the IHC on the left, the same paraffin-embedded Human tonsil tissue is first treated with the synthetic peptide and then with 222194(Anti-HNRNPUL1 Antibody) at dilution 1/20.



The image on the left is immunohistochemistry of paraffin-embedded Human esophagus cancer tissue using 222194(Anti-HNRNPUL1 Antibody) at a dilution of 1/20.



In comparison with the IHC on the left, the same paraffin-embedded Human esophagus cancer tissue is first treated with synthetic peptide and then with D264204(Anti-HNRNPUL1 Antibody) at dilution 1/20.



Gel: 6%SDS-PAGE, Lysate: 40 µg;  
Lane 1-3: HeLa, 231 and Raji cell lysates;  
Primary antibody: 222194(HNRNPUL1 Antibody) at dilution 1/200;  
Secondary antibody: Goat anti rabbit IgG at 1/8000 dilution;  
Exposure time: 20 seconds



# Product Description

Pioneering GTPase and Oncogene Product Development since 2010

---