

## HNRNPU RABBIT PAB

**Cat.#:** S221092

**Product Name:** Anti-HNRNPU Rabbit Polyclonal Antibody

**Synonyms:** SAFA; HNRPU; SAF-A; U21.1; pp120; EIEE54; GRIP120; hnRNP U; HNRNPU-AS1

**UNIPROT ID:** Q00839 (Gene Accession - NP\_004492 )

**Background:** This gene encodes a member of a family of proteins that bind nucleic acids and function in the formation of ribonucleoprotein complexes in the nucleus with heterogeneous nuclear RNA (hnRNA). The encoded protein has affinity for both RNA and DNA, and binds scaffold-attached region (SAR) DNA. Mutations in this gene have been associated with epileptic encephalopathy, early infantile, 54. A pseudogene of this gene has been identified on chromosome 14.

**Immunogen:** Synthetic peptide of human HNRNPU

**Applications:** ELISA, WB, IHC

**Recommended Dilutions:** IHC: 50-100;WB: 500-2000;ELISA: 2000-5000

**Host Species:** Rabbit

**Clonality:** Rabbit Polyclonal

**Isotype:** Immunogen-specific rabbit IgG

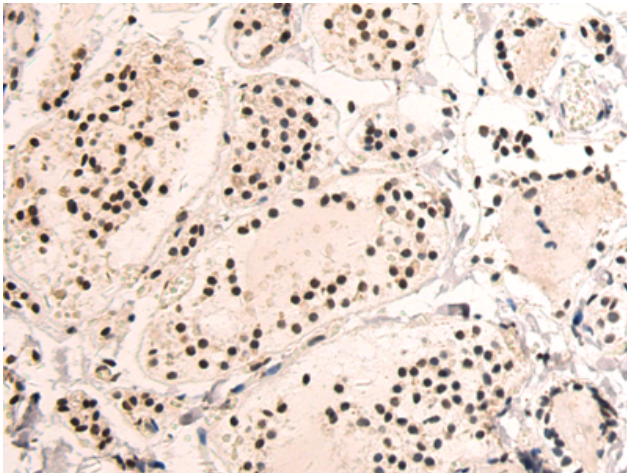
**Purification:** Antigen affinity purification

**Species Reactivity:** Human, Mouse, Rat

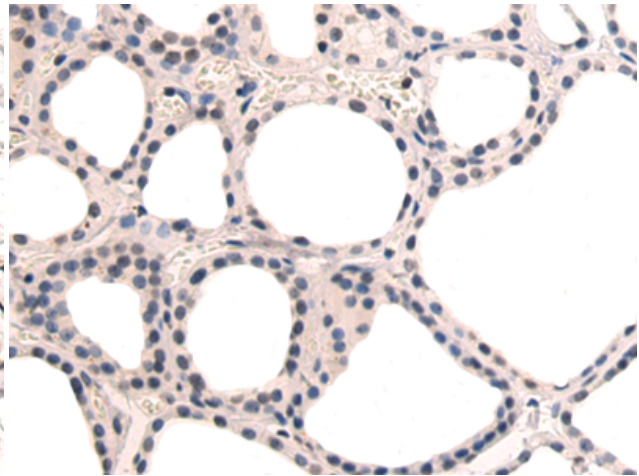
**Constituents:** PBS (without Mg<sup>2+</sup> and Ca<sup>2+</sup>), pH 7.4, 150 mM NaCl, 0.05% Sodium Azide and 40% glycerol

**Research Areas:** Epigenetics and Nuclear Signaling

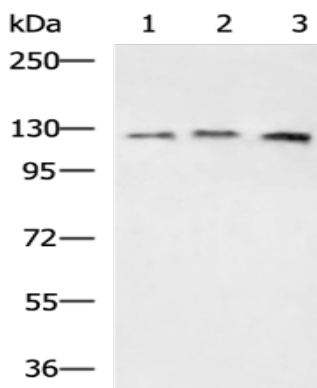
**Storage & Shipping:** Store at -20°C. Avoid repeated freezing and thawing



Immunohistochemistry analysis of paraffin embedded Human thyroid cancer tissue using 221092(HNRNPU Antibody) at a dilution of 1/50(Nucleus).



In comparison with the IHC on the left, the same paraffin-embedded Human thyroid cancer tissue is first treated with the synthetic peptide and then with 221092(Anti-HNRNPU Antibody) at dilution 1/50.



Gel: 8%SDS-PAGE, Lysate: 40  $\mu$ g;  
Lane 1-3: K562, MC3T3, Jurkat cell lysates;  
Primary antibody: 221092(HNRNPU Antibody)  
at dilution 1/600;  
Secondary antibody: HRP-conjugated Goat  
anti rabbit IgG at 1/5000 dilution;  
Exposure time: 5 minutes