

HNF1B RABBIT PAB

Cat.#: S213754

Product Name: Anti-HNF1B Rabbit Polyclonal Antibody

Synonyms: FJHN; HNF2; LFB3; TCF2; HPC11; LF-B3; MODY5; TCF-2; VHNFI; HNF-1B; HNF1beta

UNIPROT ID: P35680 (Gene Accession - NP_000449.1)

Background: This gene encodes a member of the homeodomain-containing superfamily of transcription factors. The protein binds to DNA as either a homodimer, or a heterodimer with the related protein hepatocyte nuclear factor 1-alpha. The gene has been shown to function in nephron development, and regulates development of the embryonic pancreas. Mutations in this gene result in renal cysts and diabetes syndrome and noninsulin-dependent diabetes mellitus, and expression of this gene is altered in some types of cancer. Multiple transcript variants encoding different isoforms have been found for this gene.

Immunogen: Synthetic peptide of human HNF1B

Applications: ELISA, IHC

Recommended Dilutions: IHC: 100-300; ELISA: 2000-10000

Host Species: Rabbit

Clonality: Rabbit Polyclonal

Isotype: Immunogen-specific rabbit IgG

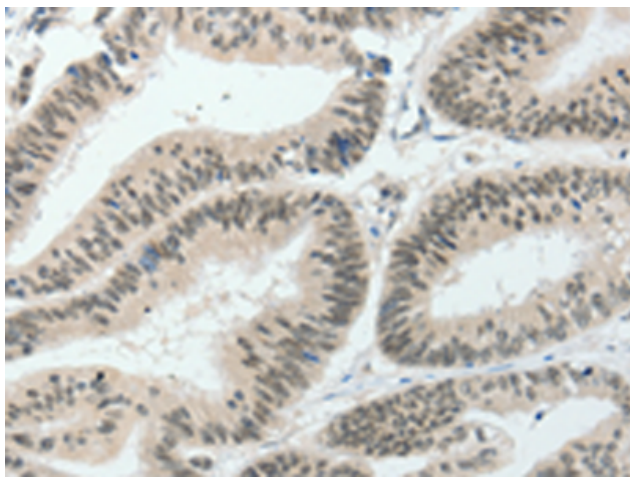
Purification: Antigen affinity purification

Species Reactivity: Human, Mouse, Rat

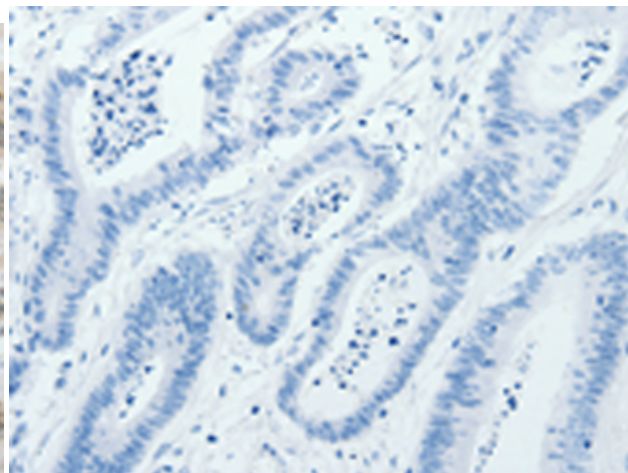
Constituents: PBS (without Mg²⁺ and Ca²⁺), pH 7.4, 150 mM NaCl, 0.05% Sodium Azide and 40% glycerol

Research Areas: Epigenetics and Nuclear Signaling, Metabolism

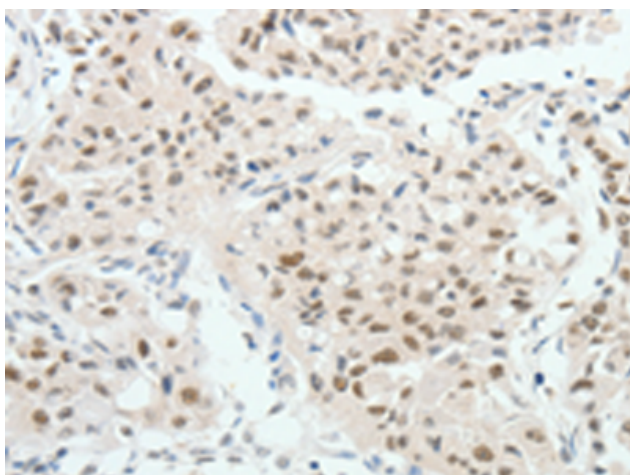
Storage & Shipping: Store at -20°C. Avoid repeated freezing and thawing



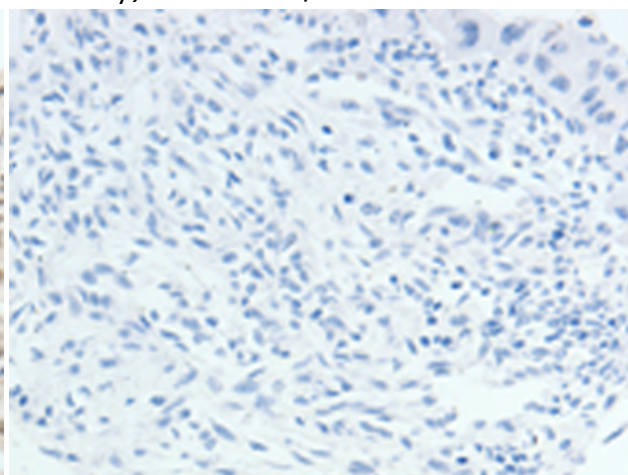
Immunohistochemistry analysis of paraffin embedded Human colon cancer tissue using 213754 (HNF1B Antibody) at a dilution of 1/80 (Nucleus).



In comparison with the IHC on the left, the same paraffin-embedded Human colon cancer tissue is first treated with the synthetic peptide and then with 213754 (Anti-HNF1B Antibody) at dilution 1/80.



The image on the left is immunohistochemistry of paraffin-embedded Human lung cancer tissue using 213754 (Anti-HNF1B Antibody) at a dilution of 1/80.



In comparison with the IHC on the left, the same paraffin-embedded Human lung cancer tissue is first treated with synthetic peptide and then with D160770 (Anti-HNF1B Antibody) at dilution 1/80.