

## HMGCL RABBIT PAB

**Cat.#:** S217506

**Product Name:** Anti-HMGCL Rabbit Polyclonal Antibody

**Synonyms:** HL

**UNIPROT ID:** P35914 (Gene Accession - BC010570 )

**Background:** The protein encoded by this gene belongs to the HMG-CoA lyase family. It is a mitochondrial enzyme that catalyzes the final step of leucine degradation and plays a key role in ketone body formation. Mutations in this gene are associated with HMG-CoA lyase deficiency. Alternatively spliced transcript variants encoding different isoforms have been found for this gene.

**Immunogen:** Fusion protein of human HMGCL

**Applications:** ELISA, WB, IHC

**Recommended Dilutions:** IHC: 50-200;WB: 1000-5000;ELISA: 5000-10000

**Host Species:** Rabbit

**Clonality:** Rabbit Polyclonal

**Isotype:** Immunogen-specific rabbit IgG

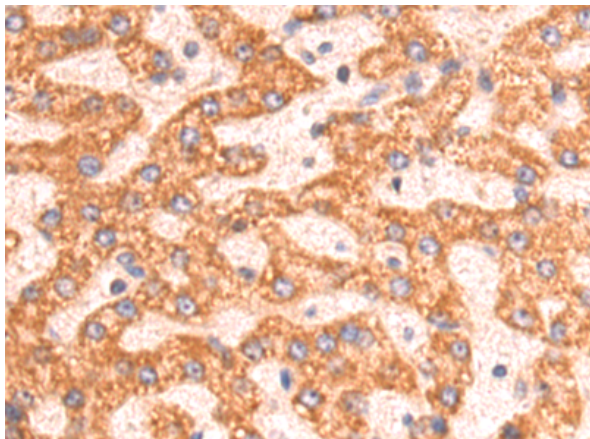
**Purification:** Antigen affinity purification

**Species Reactivity:** Human, Mouse, Rat

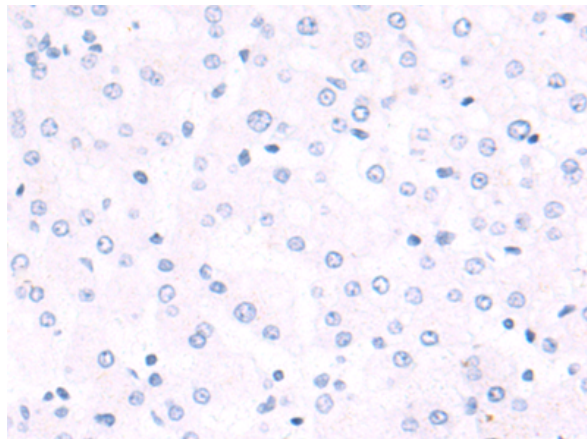
**Constituents:** PBS (without Mg<sup>2+</sup> and Ca<sup>2+</sup>), pH 7.4, 150 mM NaCl, 0.05% Sodium Azide and 40% glycerol

**Research Areas:** Metabolism, Cancer

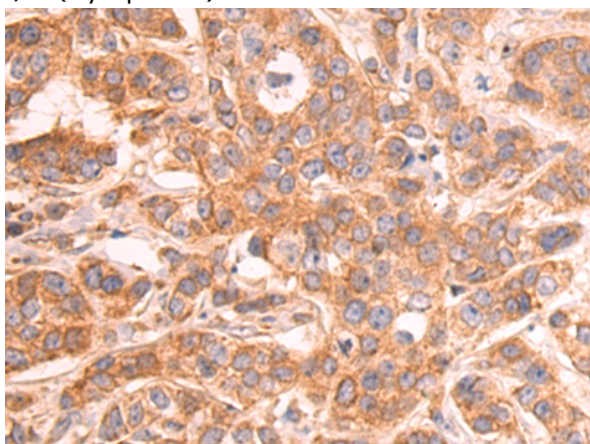
**Storage & Shipping:** Store at -20°C. Avoid repeated freezing and thawing



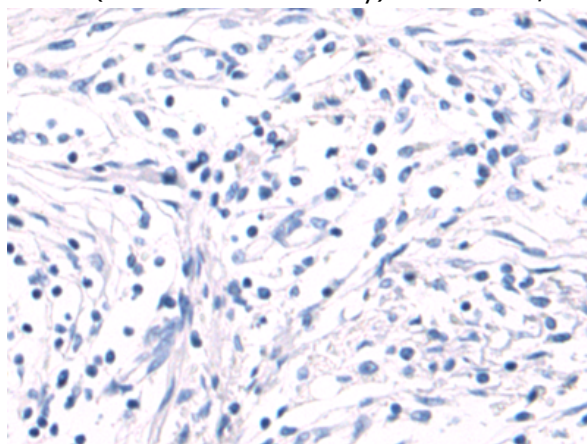
Immunohistochemistry analysis of paraffin embedded Human liver cancer tissue using 217506(HMGCL Antibody) at a dilution of 1/75(Cytoplasm).



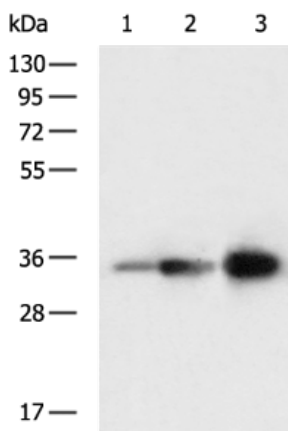
In comparison with the IHC on the left, the same paraffin-embedded Human liver cancer tissue is first treated with the fusion protein and then with 217506(Anti-HMGCL Antibody) at dilution 1/75.



The image on the left is immunohistochemistry of paraffin-embedded Human breast cancer tissue using 217506(Anti-HMGCL Antibody) at a dilution of 1/75.



In comparison with the IHC on the left, the same paraffin-embedded Human breast cancer tissue is first treated with fusion protein and then with D222488(Anti-HMGCL Antibody) at dilution 1/75.



Gel: 8%SDS-PAGE, Lysate: 40 µg;  
 Lane 1-3: Mouse brain tissue, Mouse fetal tissue,  
 Mouse adrenal gland tissue lysates;  
 Primary antibody: 217506(HMGCL Antibody) at  
 dilution 1/1200;  
 Secondary antibody: HRP-conjugated Goat anti  
 rabbit IgG at 1/5000 dilution;  
 Exposure time: 1 second



# Product Description

Pioneering GTPase and Oncogene Product Development since 2010

---