

## HMGB1 RABBIT PAB

**Cat.#:** S219852

**Product Name:** Anti-HMGB1 Rabbit Polyclonal Antibody

**Synonyms:** HMG1; HMG3; HMG-1; SBP-1

**UNIPROT ID:** P09429 (Gene Accession - NP\_002119 )

**Background:** This gene encodes a protein that belongs to the High Mobility Group-box superfamily. The encoded non-histone, nuclear DNA-binding protein regulates transcription, and is involved in organization of DNA. This protein plays a role in several cellular processes, including inflammation, cell differentiation and tumor cell migration. Multiple pseudogenes of this gene have been identified. Alternative splicing results in multiple transcript variants that encode the same protein.

**Immunogen:** Synthetic peptide of human HMGB1

**Applications:** ELISA, WB, IHC

**Recommended Dilutions:** IHC: 50-200;WB: 1000-5000;ELISA: 5000-10000

**Host Species:** Rabbit

**Clonality:** Rabbit Polyclonal

**Isotype:** Immunogen-specific rabbit IgG

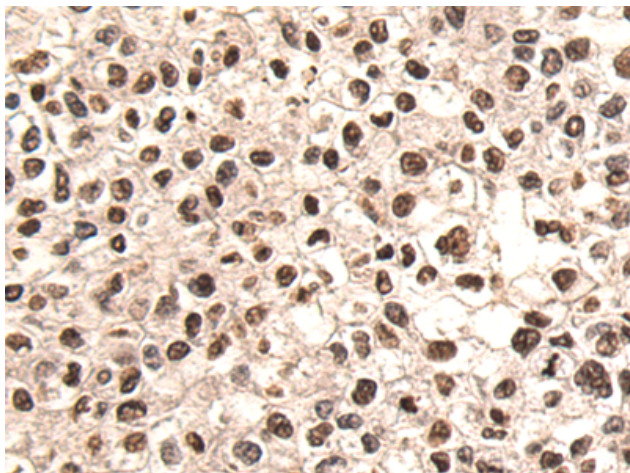
**Purification:** Antigen affinity purification

**Species Reactivity:** Human, Mouse, Rat

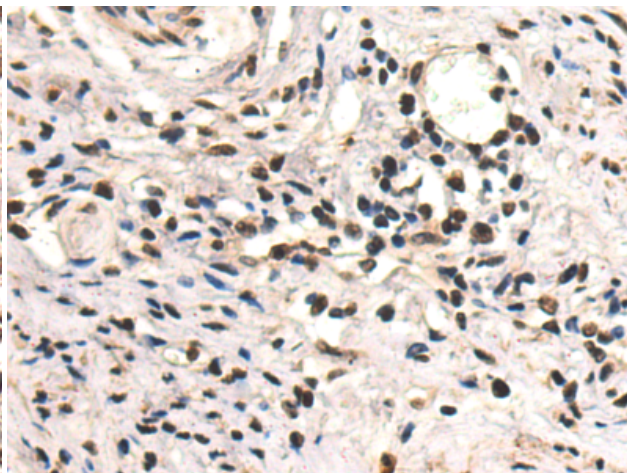
**Constituents:** PBS (without Mg<sup>2+</sup> and Ca<sup>2+</sup>), pH 7.4, 150 mM NaCl, 0.05% Sodium Azide and 40% glycerol

**Research Areas:** Epigenetics and Nuclear Signaling

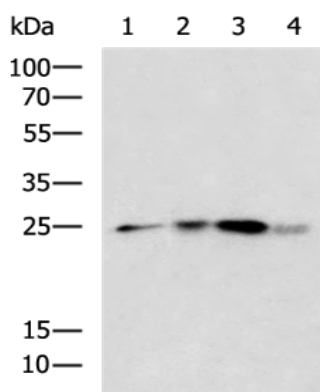
**Storage & Shipping:** Store at -20°C. Avoid repeated freezing and thawing



Immunohistochemistry analysis of paraffin-embedded Human liver cancer tissue using 219852(HMGB1 Antibody) at a dilution of 1/50(Nucleus).



Immunohistochemistry analysis of paraffin-embedded Human cervical cancer tissue using 219852(Anti-HMGB1 Antibody) at a dilution of 1/50.



Gel: 12%SDS-PAGE, Lysate: 40  $\mu$ g;  
 Lane 1-4: Human 2-3 grade invasive ductal breast tissue, LO2, 293T, Jurkat cell lysates;  
 Primary antibody: 219852(HMGB1 Antibody) at dilution 1/1200;  
 Secondary antibody: HRP-conjugated Goat anti rabbit IgG at 1/5000 dilution;  
 Exposure time: 3 seconds