

## HLTF RABBIT MAB

**Cat.#:** N262340

**Product Name:** Anti-HLTF Rabbit Monoclonal Antibody

**Synonyms:** HIP116; HIP116A; HLTF 1; Hltf; HLTF1; p113; RNF80; SMARC A3; SMARCA3; SMARCA3; SNF2L3; ZBU1

**UNIPROT ID:** Q14527

**Background:** Has both helicase and E3 ubiquitin ligase activities. Possesses intrinsic ATP-dependent nucleosome-remodeling activity; This activity may be required for transcriptional activation or repression of specific target promoters (By similarity).

**Immunogen:** A synthetic peptide of human HLTF

**Applications:** WB, ICC/IF

**Recommended Dilutions:** WB: 1/500-1/1000 IF: 1/50-1/200

**Host Species:** Rabbit

**Clonality:** Rabbit Monoclonal

**Clone ID:** R03-1E4

**MW:** Calculated MW: 114 kDa; Observed MW: 114 kDa

**Isotype:** IgG

**Purification:** Affinity Purified

**Species Reactivity:** Human

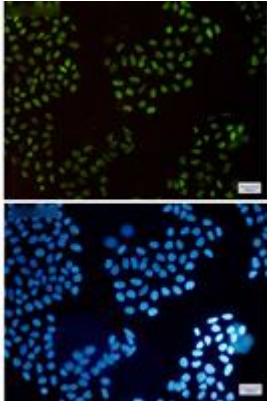
**Conjugation:** Unconjugated

**Modification:** Unmodified

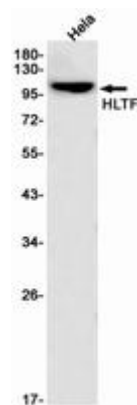
**Constituents:** PBS (without Mg<sup>2+</sup> and Ca<sup>2+</sup>), pH 7.3 containing 50% glycerol, 0.5% BSA and 0.02% sodium azide

**Research Areas:** Cell Biology

**Storage & Shipping:** Store at -20°C. Avoid repeated freezing and thawing



Immunocytochemistry analysis of HLTF (green) in HeLa using HLTF antibody, and DAPI (blue)



Western blot analysis of HLTF in HeLa lysates using HLTF antibody.