

HLA C RABBIT MAB

Cat.#: N262339

Product Name: Anti-HLA C Rabbit Monoclonal Antibody

Synonyms: MHC; HLAC; HLC-C; D6S204; PSORS1; HLA-JY3

UNIPROT ID: P10321

Background: Antigen-presenting major histocompatibility complex class I (MHC I) molecule with an important role in reproduction and antiviral immunity.

Immunogen: A synthetic peptide of human HLA-C

Applications: WB,IP

Recommended Dilutions: WB: 1/500-1/1000 IP: 1/20

Host Species: Rabbit

Clonality: Rabbit Monoclonal

Clone ID: R08-5H3

MW: Calculated MW: 41 kDa; Observed MW: 41 kDa

Isotype: IgG

Purification: Affinity Purified

Species Reactivity: Human,Mouse

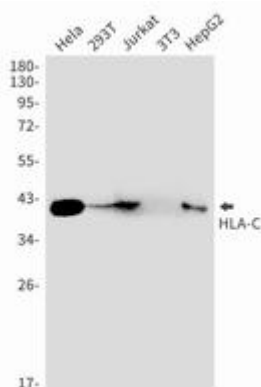
Conjugation: Unconjugated

Modification: Unmodified

Constituents: PBS (without Mg²⁺ and Ca²⁺), pH 7.3 containing 50% glycerol, 0.5% BSA and 0.02% sodium azide

Research Areas: Immunology

Storage & Shipping: Store at -20°C. Avoid repeated freezing and thawing



Western blot analysis of HLAC in HeLa, 293T, Jurkat, 3T3, HepG2 lysates using HLA C antibody.



Product Description

Pioneering GTPase and Oncogene Product Development since 2010
