

HKDC1 RABBIT MAB

Cat.#: N263367

Product Name: Anti-HKDC1 Rabbit Monoclonal Antibody

Synonyms: Hexokinase domain-containing protein 1

UNIPROT ID: Q2TB90

Background: Catalyzes the phosphorylation of hexose to hexose 6-phosphate, although at very low level compared to other hexokinases.

Immunogen: Recombinant protein of human HKDC1

Applications: WB,IP

Recommended Dilutions: WB: 1/500-1/1000 IP: 1/20

Host Species: Rabbit

Clonality: Rabbit Monoclonal

Clone ID: R06-814

MW: Calculated MW: 103 kDa; Observed MW: 103 kDa

Isotype: IgG

Purification: Affinity Purified

Species Reactivity: Human

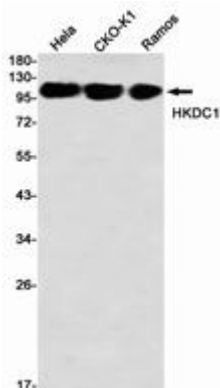
Conjugation: Unconjugated

Modification: Unmodified

Constituents: PBS (without Mg²⁺ and Ca²⁺), pH 7.3 containing 50% glycerol, 0.5% BSA and 0.02% sodium azide

Research Areas: Signal Transduction

Storage & Shipping: Store at -20°C. Avoid repeated freezing and thawing



Western blot analysis of HKDC1 in Hela, CHO-K1, Ramos lysates using HKDC1 antibody.



Product Description

Pioneering GTPase and Oncogene Product Development since 2010
