

## HK1/HK2 RABBIT PAB

**Cat.#:** S217132

**Product Name:** Anti-HK1/HK2 Rabbit Polyclonal Antibody

**Synonyms:** HK; HKD; HKI; HXK1; RP79; HMSNR; HK1-ta; HK1-tb; HK1-tc; hexokinase; HKII; HXK2

**UNIPROT ID:** P19367/P52789 (Gene Accession - BC021116 )

**Background:** Hexokinases phosphorylate glucose to produce glucose-6-phosphate, the first step in most glucose metabolism pathways. This gene encodes a ubiquitous form of hexokinase which localizes to the outer membrane of mitochondria. Mutations in this gene have been associated with hemolytic anemia due to hexokinase deficiency. Alternative splicing of this gene results in several transcript variants which encode different isoforms, some of which are tissue-specific.

**Immunogen:** Fusion protein of human HK1/HK2

**Applications:** ELISA, WB, IHC

**Recommended Dilutions:** IHC: 100-300;WB: 1000-5000;ELISA: 2000-10000

**Host Species:** Rabbit

**Clonality:** Rabbit Polyclonal

**Isotype:** Immunogen-specific rabbit IgG

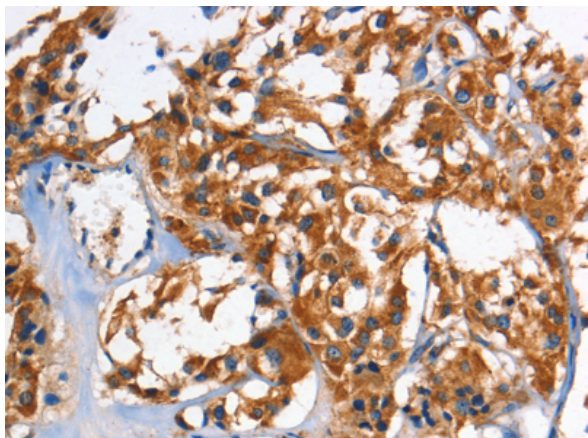
**Purification:** Antigen affinity purification

**Species Reactivity:** Human, Mouse, Rat

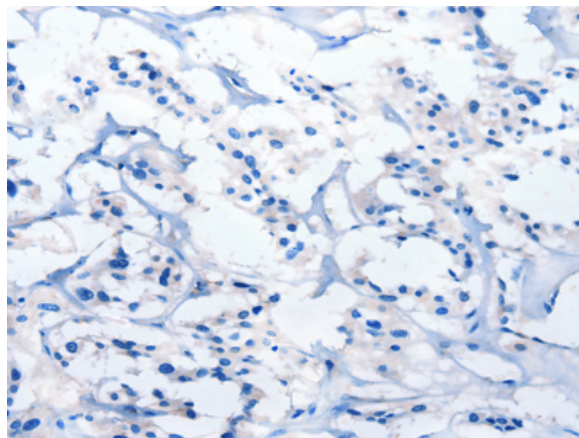
**Constituents:** PBS (without Mg<sup>2+</sup> and Ca<sup>2+</sup>), pH 7.4, 150 mM NaCl, 0.05% Sodium Azide and 40% glycerol

**Research Areas:** Metabolism, Cancer, Cardiovascular

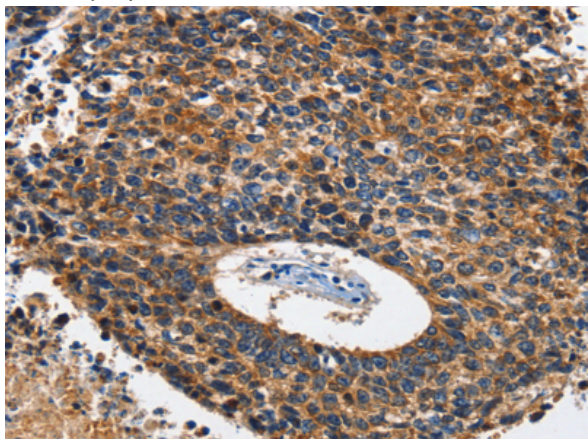
**Storage & Shipping:** Store at -20°C. Avoid repeated freezing and thawing



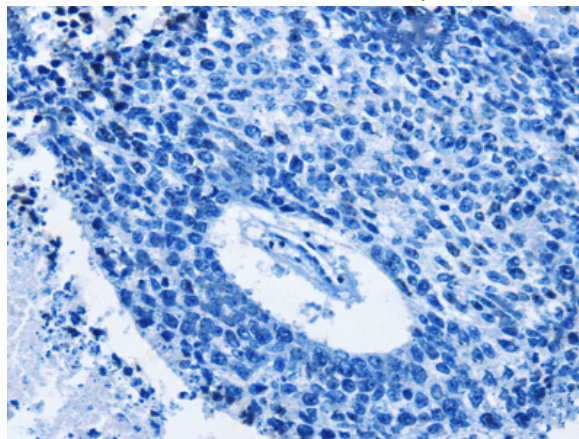
Immunohistochemistry analysis of paraffin embedded Human thyroid cancer tissue using 217132(HK1/HK2 Antibody) at a dilution of 1/60(Cytoplasm).



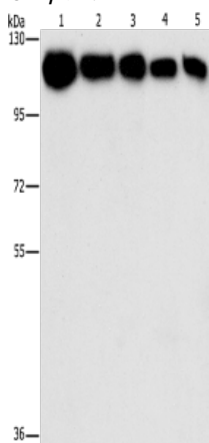
In comparison with the IHC on the left, the same paraffin-embedded Human thyroid cancer tissue is first treated with the fusion protein and then with 217132(Anti-HK1/HK2 Antibody) at dilution 1/60.



The image on the left is immunohistochemistry of paraffin-embedded Human lung cancer tissue using 217132(Anti-HK1/HK2 Antibody) at a dilution of 1/60.



In comparison with the IHC on the left, the same paraffin-embedded Human lung cancer tissue is first treated with fusion protein and then with D221853(Anti-HK1/HK2 Antibody) at dilution 1/60.



Gel: 10%SDS-PAGE, Lysate: 40  $\mu$ g;  
Lane 1-5: A431 cells, K562 cells, 231 cells, hela cells, hepG2 cells;  
Primary antibody: 217132(HK1/HK2 Antibody) at dilution 1/1200;  
Secondary antibody: Goat anti rabbit IgG at 1/8000 dilution;  
Exposure time: 1 second



# Product Description

Pioneering GTPase and Oncogene Product Development since 2010

---