

## HISTONE H4 RABBIT MAB

**Cat.#:** N262337

**Product Name:** Anti-Histone H4 Rabbit Monoclonal Antibody

**Synonyms:** Histone H4

**UNIPROT ID:** P62805

**Background:** The chromatin fiber is further compacted through the interaction of a linker histone, H1, with the DNA between the nucleosomes to form higher order chromatin structures. This gene is intronless and encodes a member of the histone H4 family.

**Immunogen:** A synthetic peptide of human Histone H4

**Applications:** WB,IHC-F,IHC-P,ICC/IF,ChIP

**Recommended Dilutions:** WB: 1/500-1/1000 IHC: 1/50-1/100 IF: 1/50-1/200  
ChIP: 1/20

**Host Species:** Rabbit

**Clonality:** Rabbit Monoclonal

**Clone ID:** R05-8H9

**MW:** Calculated MW: 11 kDa; Observed MW: 11 kDa

**Isotype:** IgG

**Purification:** Affinity Purified

**Species Reactivity:** Human

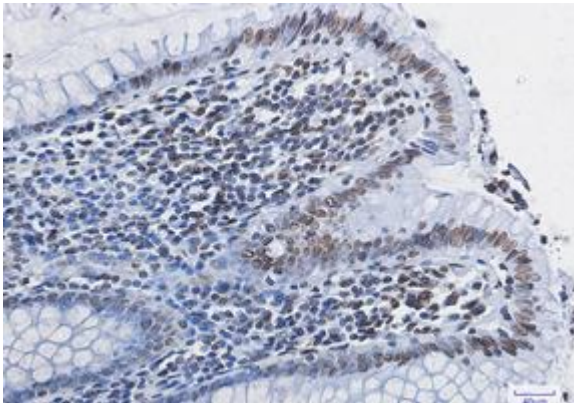
**Conjugation:** Unconjugated

**Modification:** Unmodified

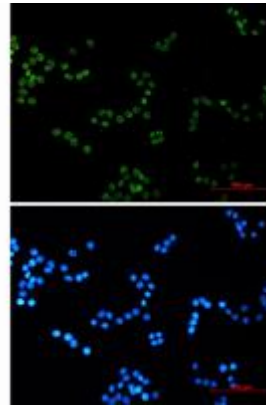
**Constituents:** PBS (without Mg<sup>2+</sup> and Ca<sup>2+</sup>), pH 7.3 containing 50% glycerol, 0.5% BSA and 0.02% sodium azide

**Research Areas:** Epigenetics and Nuclear Signaling

**Storage & Shipping:** Store at -20°C. Avoid repeated freezing and thawing



Immunohistochemistry analysis of paraffin-embedded Human colon cancer tissue using Histone H4 antibody. High-pressure and temperature Sodium Citrate pH 6.0 was used for antigen retrieval.



Immunocytochemistry analysis of Histone H4 (green) in Hela using Histone H4 antibody, and DAPI (blue).



Western blot analysis of Histone H4 in Hela lysates using Histone H4 antibody.