

## HISTONE H2B RABBIT PAB

**Cat.#:** N225114

**Product Name:** Anti-Histone H2B Rabbit pAb

**Synonyms:** HIST1H2BB; H2BFF; Histone H2B type 1-B; Histone H2B.l; Histone H2B.f; H2B/f; HIST1H2BC; H2BFL; HIST1H2BE; H2BFH; HIST1H2BF; H2BFG; HIST1H2BG; H2BFA; HIST1H2BI; H2BFK; Histone H2B type 1-C/E/F/G/I; Histone H2B.l A; Histone H2B.a; H2B/a; Histone H2B.g; H2B/g; Histone H2B.h; H2B/h; Histone H2B.k; H2B/k; Histone H2B.l; H2B/l; HIST1H2BD; H2BFB; HIRIP2; Histone H2B type 1-D; HIRA-interacting protein 2; Histone H2B.l B; Histone H2B.b; H2B/b; HIST1H2BH; H2BFJ; Histone H2B type 1-H; Histone H2B.j; H2B/j; HIST1H2BJ; H2BFR; Histone H2B type 1-J; Histone H2B.l; Histone H2B.r; H2B/r; HIST1H2BK; H2BFT; HIRIP1; Histone H2B type 1-K; H2B K; HIRA-interacting protein 1; HIST1H2BL; H2BFC; Histone H2B type 1-L; Histone H2B.c; H2B/c; HIST1H2BM; H2BFE; Histone H2B type 1-M; Histone H2B.e; H2B/e; HIST1H2BN; H2BFD; Histone H2B type 1-N; Histone H2B.d; H2B/d; HIST1H2BO; H2BFH; H2BFN; Histone H2B type 1-O; Histone H2B.2; Histone H2B.n; H2B/n

### UNIPROT

**ID:** P33778/P62807/P58876/Q93079/P06899/O60814/Q99880/Q99879/Q99877/P23527

**Background:** Belongs to the histone H2B family. Play a central role in transcription regulation, DNA repair, DNA replication and chromosomal stability. DNA accessibility is regulated via a complex set of post-translational modifications of histones, also called histone code, and nucleosome remodeling.

**Immunogen:** Synthesized peptide derived from the Internal region of human Histone H2B.

**Applications:** WB,IHC-P,ELISA

**Recommended Dilutions:** WB: 1/500-1/1000 IHC: 1/50-1/100 ELISA: 1/10000

**Host Species:** Rabbit

**Clonality:** Rabbit Polyclonal

**Clone ID:** -

**MW:** Calculated MW: 14 kDa; Observed MW: 14 kDa

**Isotype:** IgG

**Purification:** Affinity Purified

**Species Reactivity:** Human,Mouse,Rat

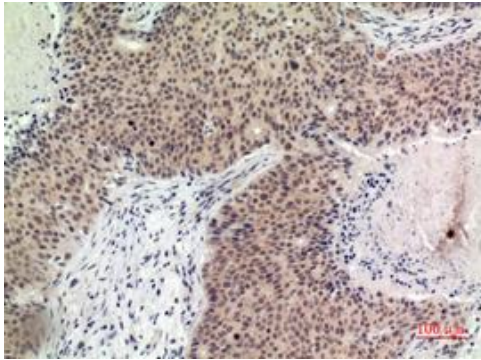
**Conjugation:** Unconjugated

**Modification:** Unmodified

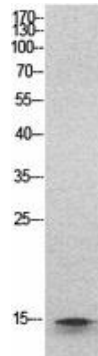
**Constituents:** PBS (without Mg<sup>2+</sup> and Ca<sup>2+</sup>), pH 7.3 containing 50% glycerol, 0.5% BSA and 0.02% sodium azide

**Research Areas:** Epigenetics and Nuclear Signaling

**Storage & Shipping:** Store at -20°C. Avoid repeated freezing and thawing



Immunohistochemistry analysis of paraffin-embedded Human Breastcancer using Histone H2B antibody. High-pressure and temperature Sodium Citrate pH 6.0 was used for antigen retrieval.



Western blot analysis of Histone H2B in HeLa lysates using Histone H2B antibody.